



PRODUCT SOLUTIONS CATALOGUE



Partnering with Rubbermaid Commercial Products is the best way to control the growing complexity you face every day managing your waste management, cleaning and hygiene needs.



FOR YOUR BUSINESS FOR YOUR PEOPLE

DURABILITY = SUSTAINABILITY

To provide longer lasting safety, you need hand hygiene, waste and cleaning products that stand the test of time. No-one looks closer at what you need to deliver across every aspect of your facility, with durability central to how we design and manufacture every product. We're committed to delivering better cost in use and supporting your sustainability goals by creating the most effective, durable and dependable solutions for you.

Receptionists. Teachers. Retailers. Warehouse workers, care providers and cleaning staff.

In changing times and evolving workplaces, we protect what's most important to you. And while keeping your people and your business safer, we look closer at reducing your costs, improving your sustainability and increasing your productivity.

Control the growing daily complexities you face in managing your hand hygiene, waste management and cleaning with a partner you can depend on, Rubbermaid Commercial Products.





WASHROOM

| | |
|-----------------------------------|-----------|
| HAND HYGIENE | 6 |
| Overview & Education | 8 - 13 |
| Automatic Skin Care..... | 14 - 16 |
| Manual Skin Care..... | 18 - 25 |
| Stands | 26 - 31 |
| Pump Top & Accessories | 32 - 34 |
| Starter Pack..... | 35 |
| AIR CARE | 38 |
| Overview & Education | 38 - 43 |
| Passive Air Care | 44 - 45 |
| Active Air Care..... | 46 - 55 |
| SURFACE CARE | 56 |
| WASHROOM ACCESSORIES | 67 |

WASTE MANAGEMENT

| | |
|---------------------------------------|------------|
| FRONT-OF-HOUSE SOLUTIONS | 80 |
| Pedal Operated Bins..... | 80 - 83 |
| Recycling Stations | 84 - 91 |
| Decorative Refuse..... | 92 - 99 |
| BACK-OF-HOUSE SOLUTIONS | 100 |
| OUTDOOR SOLUTIONS | 110 |
| Outdoor Waste Containers..... | 110 - 113 |
| Smoking Management..... | 114 - 119 |

CLEANING

| | |
|--------------------------------------|------------|
| SURFACE CLEANING | 126 |
| Non-Disposable Microfibre | 126 - 129 |
| Disposable Microfibre | 130 |
| FLOOR CLEANING | 132 |
| Flat Mopping & Dusting..... | 132 - 143 |
| Cleaning Buckets & String Mops | 144 - 147 |
| Sweeping | 148 - 150 |
| CLEANING MOBILITY | 152 |
| Cleaning Carts | 152 - 157 |
| Housekeeping Carts..... | 158 - 165 |
| Accessories | 166 - 169 |

SAFETY

| | |
|------------------------|-----------|
| Barricade Systems..... | 172 - 175 |
| Floor Signs..... | 176 - 177 |
| Spillage System | 178 |

MATERIAL HANDLING

| | |
|-----------------------|-----------|
| Bulk Trucks..... | 182 - 185 |
| Platform Trucks | 186 - 189 |
| Service Carts..... | 190 - 198 |
| Storage..... | 199 - 201 |



HAND HYGIENE

Protect not only your employees and visitors but also your facility's image by providing visible, high quality hand hygiene solutions.

NOBODY LOOKS CLOSER AT HAND HYGIENE.

HYGIENE FIRST. PARTNERS ALWAYS.



THE RCP PROMISE
HandSafe



DISPENSING SOLUTIONS

Visible and durable hand hygiene is more important than ever to protect your visitors and employees and show you care. RCP provides highly effective and high quality solutions for every kind of facility. We believe in the quality of our products which is why all dispensers come with a lifetime warranty. Explore the variety of RCP dispensers and solutions to find what fits your needs best.

TOUCH-FREE DISPENSERS



AUTOFOAM

High quality foam soaps and hand rubs in a durable touch-free dispenser to prevent the spread of germs, including our sustainable Lumecel™ dispenser powered by indoor light.

MANUAL DISPENSERS



FLEX™



Flexible manual dispenser featuring the widest range of foam and lotion refills and adjustable dose size.



MANUAL FOAM

Perfect balance between quality and value.



SPRAY

RCP's most cost-effective soap dispenser in the smallest dispenser footprint.



PUMP TOP

ALCOHOL GEL HAND SANITISER

Convenient 500ml format for on-the-go hygiene without compromising on efficiency.

HAND HYGIENE

REFERENCE GUIDE



| | | TOUCH-FREE | | MANUAL | | PUMP |
|--------------------------------|--|---|---------------------------|---------------------------|---------------------------|-----------------------|
| | | AUTOFOAM LUMECEL™ BATTERY FREE / AUTOFOAM | FLEX™ | MANUAL FOAM | MANUAL SPRAY | ALCOHOL GEL SANITISER |
| DISPENSER SIZE | | 1100ML | 1300ML / 500ML | 800ML / 400ML | 800ML / 400ML | 500ML BOTTLE |
| HAND WASHES PER REFILL (UP TO) | | 2,750 DOSES | 3,250 DOSES / 1,625 DOSES | 2,000 DOSES / 1,000 DOSES | 4,000 DOSES / 2,000 DOSES | 333 DOSES |
| REFILL TYPE | | FOAM | FOAM AND LOTION | FOAM | SPRAY | GEL |
| SOAP | SOAP WITH MOISTURISERS | ● | ● | ● 400ML ONLY | ● | |
| | FREE N' CLEAN, DYE & FRAGRANCE-FREE - ECOLABEL | ● | | ● | | |
| | ANTIBACTERIAL SOAP | ● | ● | ● | ● | |
| | HAIR & BODY WASH | | ● | | | |
| HAND SANITISER | ALCOHOL | ● | ● FOAM ONLY | | ● 400ML ONLY | ● |
| | ALCOHOL FREE | ● | ● FOAM ONLY | ● | | |

SOAP & SANITISER

EDUCATION

Proper hand hygiene is important to preventing the spread of germs in high-traffic areas; 80%* of germs are transmitted by touch. Understanding the roles of soap and sanitiser and how they work together can help prevent illness.



Benefits of BIOCIDES PRODUCT REGULATIONS (BPR) - available on RCP Alcohol Plus hand sanitiser refills, proven to kill 99.99% of Germs, tested against EN 1500:2013 - Bacteria, EN13727: Bacteria, EN13624: Dirty conditions Yeast and Fungai, EN 14476 + A1: Virucidal activity**

*Keep Your Germs to Yourself! | Baptist Health, Bethany Chandler, Pharmacy Resident, BHMC-Little Rock. <https://www.baptist-health.com/keep-your-germs-to-yourself/>
 **According to the standard this product is effective against ALL ENVELOPED VIRUSES under the conditions tested. Enveloped viruses include: HIV, coronavirus (e.g. SARS-CoV-2, MERS), Influenza, HBV, HCV, etc.



LEARN THE INGREDIENTS

Soaps and sanitisers are made up of a combination of ingredients to meet your specific needs.

SOAP:

Water + Surfactant + Fragrance / Dye / Moisturiser / Antibacterial

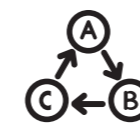
1
2
3
4
5

SANITISER:

Water + Moisturiser + Antibacterial / Alcohol

4
5
6

- | | | |
|---|--|---|
| <p>1 SURFACTANT: Cleansing and foaming agent that removes dirt and germs</p> | <p>2 FRAGRANCE: Clean with or without added scents</p> | <p>3 DYE: Clean with or without added color</p> |
| <p>4 MOISTURISER: Helps to keep skin hydrated</p> | <p>5 ANTIBACTERIAL: Alcohol-free ingredient helps to kill germs</p> | <p>6 ALCOHOL: Active ingredient used in alcohol-based sanitisers</p> |



KNOW THE DIFFERENCES

Soaps and sanitisers are available in different textures.



FOAM

- Dispenses in a light, airy consistency
- Lathers quickly for an easy hand wash
- Rinses easier to reduce drain maintenance



SPRAY

- Dispenses in a liquid consistency
- Thick lather for thorough hand coverage
- Easy to rinse



LOTION

- Dispenses in a thick, liquid consistency
- Creates a rich lather
- Uses more water in day-to-day handwashing activities



GEL

- For sanitisers only
- Has a gentle, cooling effect
- Evaporates quickly affect rubbing hands
- Reduced chance of spilling or dripping onto surfaces or flooring



SOAP & SANITISER

FORMULATIONS



SANITISERS

ALCOHOL PLUS HAND SANITISER Effective and fast-acting sanitiser

Alcohol-based sanitiser available as foam and spray for a wide range of dispensers

- Kills 99.99% of many common germs
- Fast acting formulation, disinfects hands in 30 sec
- Bactericidal, virucidal and yeasticidal
- Tested against EN 1500:2013 - Bacteria, EN13727: Bacteria, EN13624: Dirty conditions Yeast and Fungai, EN 14476 + A1: Virucidal activity
- Contains 70% alcohol, in line with WHO recommendations
- Contains moisturising ingredients to help prevent skin dryness

AutoFoam & AutoFoam Lumecel dispensers / Flex dispensers / Spray dispensers



ALCOHOL FREE HAND SANITISER Ideal for use in high traffic environments like schools, healthcare, industrial facilities and more.

Hand hygiene for anyone, anywhere, anytime

- Minimises risk of alcohol mis-use
- Kills 99.99% of common germs
- Fast acting solution that disinfects hands in 30 seconds
- Perfume-free solution minimises skin irritation risk and is non-taining for food environments
- Contains moisturising ingredients
- Gentle, hypoallergenic formula

AutoFoam & AutoFoam Lumecel dispensers / Flex dispensers / Spray dispensers



SOAPS

MOISTURISING FOAM SOAP Rich, gentle foam hand wash for everyday use

Light floral aromatic fragrance formula enriched with moisturisers to help prevent skin dryness

- Dermatologically tested
- Hygienically sealed refill
- High capacity refills deliver up to 3,250 hand washes for best cost in use
- Available for touch-free AutoFoam, Flex and Manual Foam dispensers

AutoFoam & AutoFoam Lumecel dispensers / Flex dispensers



FREE'N CLEAN FOAM SOAP Caring to your skin and the environment

Dermatologically tested to gently clean hands and leave skin feeling smooth and conditioned

- Ecolabel certified, making it better for the environment and better for you
- Fragrance and dye free, to minimise skin sensitisation risks
- Enriched with moisturisers

AutoFoam & AutoFoam Lumecel dispensers / Manual Foam dispensers



ANTIBACTERIAL FOAM SOAP Enhanced foam soap for a higher level clean

Antibacterial soap that kills germs, ideal for facilities looking for added peace of mind.

- Kills 99.99% of common germs, fully tested and proven to be bactericidal, virucidal and yeasticidal
- Fast acting solution that disinfects hands in 30 seconds
- Contains moisturising ingredients
- Gentle, hypoallergenic formula
- Pleasant to use

AutoFoam & AutoFoam Lumecel / Flex / Spray



AutoFoam with LumeCel™

LumeCel-powered dispensers use ambient light to operate automatically

AUTOFOAM DISPENSERS



1980826

- 1 TOUCH-FREE DELIVERY:**
Dispenses soap automatically to help prevent cross-contamination
- 2 LIGHT-POWERED:**
LumeCel technology efficiently powers dispensers, using only indoor light
- 3 REFILL & LIGHT ALERTS:**
Indicate when refill is required or energy cells need more light
- 4 COLOR OPTIONS:**
Choose from a variety of color options to complement your washroom

Continuous touch-free skin-care protection. Touch-free foam sanitiser and soap delivery with rechargeable energy system reduces the spread of germs.



1980825



1980826

- Rechargeable Power: Powered by the LumeCel™ rechargeable energy system captures energy from any indoor or natural light source
- Touch-Free Delivery: No-touch dispensing reduces the risk of contact with bacteria
- LED-Indication: For refill and battery levels – no need to open dispenser to check product level
- Lifetime Warranty: Durable dispensers come with lifetime warranty

| REF | DESCRIPTION | COLOUR | PACK |
|---------|---|--------|------|
| 1980825 | LUMECEL™ AUTOFOAM DISPENSER 1100ML - WHITE/WHITE | ○ | 10 |
| 1980826 | LUMECEL™ AUTOFOAM DISPENSER 1100ML - BLACK/CHROME | ● | 10 |

AUTOFOAM DISPENSERS

Stay safe with easy touch-free cleaning. Prevent the spread of germs with high quality foam in a durable touch-free dispenser.



- Touch-Free Dispensing: No-touch dispensing reduces the risk of contact with bacteria
- Industry-Leading Battery Life: up to 3 years or 120,000 washes
- LED-Indication: For refill and battery levels – no need to open dispenser to check product level
- Lifetime Warranty: Durable dispensers come with lifetime warranty

| REF | DESCRIPTION | COLOUR | PACK |
|----------|--|--------|------|
| FG750127 | AUTOFOAM DISPENSER 1100ML - BLACK/BLACK | ●● | 10 |
| FG750411 | AUTOFOAM DISPENSER 1100ML - BLACK/CHROME | ●● | 10 |
| 1851397 | AUTOFOAM DISPENSER 1100ML - WHITE/WHITE | ○○ | 10 |
| 2162587 | AUTOFOAM DISPENSER 500 ML - WHITE/WHITE | ○○ | 10 |
| 2162588 | AUTOFOAM DISPENSER 500 ML - BLACK/CHROME | ●● | 10 |
| 2162589 | AUTOFOAM DISPENSER 500 ML - BLACK/BLACK | ●● | 10 |



FG750411

AUTOFOAM REFILLS

Advanced foam formulations. Robust, sealed refills with integrated foam pumps, designed to minimise the risks of cross contamination.



- Alcohol Plus Hand Sanitiser: Effective and fast acting, kills 99.99% of common germs.
- Alcohol Free Hand Sanitiser: Kills 99.99% of common germs, ideal for high-risk facilities.
- Antibacterial Foam Soap: Hypoallergenic formula kills 99.99% of common germs.
- Moisturising Foam Soap: Rich, gentle hand wash with light fragrances for everyday use.
- Free 'N Clean Foam Soap Ecolabel: Dermatologically tested to gently clean hands and leaves skin feeling smooth and conditioned. Fragrance and dye free.

| REF | DESCRIPTION | VOLUME | PACK |
|----------|----------------------------------|--------|------|
| 2146691 | ALCOHOL PLUS HAND SANITISER | 1000ML | 4 |
| 2167576 | ALCOHOL FREE HAND SANITISER | 1100ML | 4 |
| 2167858 | ANTIBACTERIAL FOAM SOAP | 1100ML | 4 |
| RVU11529 | FOAM SOAP WITH MOISTURISERS | 1100ML | 4 |
| RVU11502 | FREE 'N CLEAN FOAM SOAP ECOLABEL | 1100ML | 4 |
| 2162581 | ALCOHOL PLUS SANITISER | 500ML | 5 |
| 2162582 | ALCOHOL FREE SANITISER | 500ML | 5 |
| 2162583 | FOAM SOAP WITH MOISTURISERS | 500ML | 5 |
| 2162584 | ANTIBACTERIAL FOAM SOAP | 500ML | 5 |
| 2162585 | FREE 'N CLEAN FOAM SOAP ECOLABEL | 500ML | 5 |
| 2162586 | TOILET SEAT CLEANER | 500ML | 5 |

FLEX™ DISPENSERS & REFILLS

Flex™ Dispenser



Tailored hygiene for complete confidence. Flexible manual dispenser with the widest range of foam and lotion refills, and adjustable dose size.



3486589 3486590 3486591 3486592

- Unique Dispenser Design: Allowing foam and lotion refills in the same dispenser
- Antimicrobial Pushbar: Protected with BioMaster technology
- Our Broadest Formulation Range: Including hand washes, body washes and hand sanitisers
- Adjustable dose size for effective cost control (0.4ml, 0.65ml, 1ml)
- Lifetime Warranty: Durable dispensers come with lifetime warranty

| REF | DESCRIPTION | VOLUME | COLOUR | PACK |
|---------|-----------------|--------|--------|------|
| 3486589 | FLEX™ DISPENSER | 500ML | ○ | 10 |
| 3486590 | FLEX™ DISPENSER | 500ML | ● | 10 |
| 3486591 | FLEX™ DISPENSER | 1300ML | ○ | 10 |
| 3486592 | FLEX™ DISPENSER | 1300ML | ● | 10 |



FLEX™ REFILLS

Flex™ Refills Foam

Robust, sealed refills with integrated foam pumps, designed to minimise the risks of cross contamination.



ENRICHED FOAM

- **Alcohol Plus Sanitiser:** Effective and fast acting, kills 99.99% of common germs.
- **Alcohol Free Sanitiser:** Helps reduce the growth of microorganisms on skin.
- **Hand Soap:** Rich, gentle hand wash with light fragrances for everyday use.
- **Antibacterial Foam Soap:** High quality foam kills 99.99% of common germs.
- **Hair And Body Shampoo:** Lightly fragranced hair & body foam formulation enriched with skin conditioners.

| REF | DESCRIPTION | VOLUME | PACK |
|---------|---|--------|------|
| 2146693 | FLEX™ ENRICHED FOAM ALCOHOL PLUS HAND SANITISER | 500ML | 5 |
| 2167621 | FLEX™ ENRICHED FOAM ALCOHOL FREE HAND SANITISER | 500ML | 5 |
| 3486605 | FLEX™ ENRICHED FOAM HAND SOAP | 500ML | 5 |
| 2167901 | FLEX™ ENRICHED FOAM ANTIBACTERIAL SOAP | 500ML | 5 |
| 3486609 | FLEX™ ENRICHED FOAM HAIR & BODY SHAMPOO | 500ML | 5 |
| 2146692 | FLEX™ ENRICHED FOAM ALCOHOL PLUS HAND SANITISER | 1000ML | 4 |
| 2167479 | FLEX™ ENRICHED FOAM ALCOHOL FREE HAND SANITISER | 1300ML | 3 |
| 3486615 | FLEX™ ENRICHED FOAM HAND SOAP | 1300ML | 3 |
| 2167860 | FLEX™ ENRICHED FOAM ANTIBACTERIAL SOAP | 1300ML | 3 |

Flex™ Refills Lotion

Robust, sealed refills with integrated pumps, designed to minimise the risks of cross contamination.



ENRICHED LOTION

- **Hand Soap:** Rich lotion soap enriched with soothing ingredients and featuring a fresh and fruity fragrance.
- **Soap, Antibacterial:** Helps control the growth of micro-organisms on the skin.
- **Hair And Body Shampoo:** Rich lotion hair & body shampoo enriched with soothing ingredients and featuring a fresh spring fragrance.

| REF | DESCRIPTION | VOLUME | PACK |
|---------|---|--------|------|
| 3486606 | FLEX™ ENRICHED LOTION HAND WASH | 500ML | 5 |
| 3486608 | FLEX™ ENRICHED LOTION SOAP, ANTIBACTERIAL | 500ML | 5 |
| 3486610 | FLEX™ ENRICHED LOTION HAIR & BODY SHAMPOO | 500ML | 5 |
| 3486616 | FLEX™ ENRICHED LOTION HAND SOAP | 1300ML | 3 |
| 3486618 | FLEX™ ENRICHED LOTION SOAP, ANTIBACTERIAL | 1300ML | 3 |

MANUAL FOAM DISPENSERS & REFILLS

Manual Foam Dispenser

Quality and value in perfect balance. Robust manual dispenser with high quality foam soap and sanitiser for safer environments.



FG402310



1853755



FG450017

- Antimicrobial Pushbar: Protected with BioMaster technology
- Hygienically Sealed Refills: Keeps soap and hand sanitisers fresh and avoid cross contamination, fast and easier to service
- Broad Range Of Formulations: In convenient bag-in-box format - easy to store and quick to handle
- Lifetime Warranty: Durable dispensers come with lifetime warranty

| REF | DESCRIPTION | COLOUR | PACK |
|----------|---|--------|------|
| FG402310 | FOAM SOAP DISPENSER 400ML - WHITE/GREY | ○ | 12 |
| FG450017 | FOAM SOAP DISPENSER 800ML - WHITE/GREY | ○ | 10 |
| 1853755 | FOAM SOAP DISPENSER 800ML - STAINLESS STEEL | ● | 10 |

Manual Foam Refills

Convenient bag-in-box, sealed refills with integrated foam pumps, designed to minimise the risks of cross contamination. Colour coded refills for easy identification.



RVU8502



2167904



RVU8529



RVU8585



RVU9001

- Alcohol Free Sanitiser: Kills 99.99% of common germs, ideal for high-risk facilities.
- Free 'N Clean Foam Soap Ecolabel: Dermatologically tested to gently clean hands and leaves skin feeling smooth and conditioned. Fragrance and dye free.
- Antibacterial Foam Soap: Hypoallergenic formula kills 99.99% of common germs.
- Foam Soap With Moisturisers: Rich, gentle hand wash with light fragrances for everyday use.

| REF | DESCRIPTION | PACK |
|---------|--|------|
| RVU8502 | FREE 'N CLEAN FOAM SOAP ECOLABEL 800ML | 6 |
| 2167904 | ANTIBACTERIAL FOAM SOAP 800ML | 6 |
| RVU8529 | FOAM SOAP WITH MOISTURISERS 800ML | 6 |
| 2167623 | ALCOHOL FREE HAND SANITISER 800ML | 6 |
| RVU9001 | FOAM SOAP 400ML | 12 |

MANUAL SPRAY DISPENSERS & REFILLS

Manual Spray Dispenser



Best value safety in smaller spaces. Efficient dosing technology gives up to 4,000 hand washes per 800ml refill.



RSZ5607



RSZ9012



RSZ5107

- Small Dispenser Footprint: Only 19.5 x 9.5 cm dispenser can be placed anywhere
- Simple Spray Solution: Produces a thick lather for thorough hand coverage
- Hygienically Sealed Refills: Keeps soap and hand sanitisers fresh and avoids cross contamination, which are fast and easier to service
- Lifetime Warranty: Durable dispensers come with lifetime warranty

| REF | DESCRIPTION | COLOUR | PACK |
|---------|--|--------|------|
| RSZ5607 | SPRAY SOAP DISPENSER 400ML WHITE/GREY | ○ | 12 |
| RSZ9012 | SPRAY SOAP DISPENSER 400ML STAINLESS STEEL | ● | 12 |
| RSZ5107 | SPRAY SOAP DISPENSER 800ML WHITE/GREY | ○ | 12 |

Manual Spray Refills

Convenient refill spray pouch and box design, easy to install.



RVU5749



RVU5079



RVU5748



RVU5078



2146695

- Alcohol Plus Hand Sanitiser: Effective and fast acting, kills 99.99% of common germs.
- Spray Lotion Soap With Moisturisers: Rich, gentle hand wash with light fragrances for everyday use.
- Spray Soap, Antibacterial: Hypoallergenic formula kills 99.99% of common germs.

| REF | DESCRIPTION | PACK |
|---------|---|------|
| RVU5749 | SPRAY LOTION SOAP WITH MOISTURISERS 400ML | 12 |
| RVU5079 | SPRAY LOTION SOAP WITH MOISTURISERS 800ML | 6 |
| 2167905 | ANTIBACTERIAL SPRAY SOAP 400ML | 12 |
| RVU5078 | ANTIBACTERIAL SPRAY SOAP 800ML | 6 |
| 2146695 | ALCOHOL PLUS SPRAY SANITISER 400ML | 12 |

DISPENSER STANDS & ACCESSORIES

Provide highly effective hand hygiene solutions wherever and whenever needed in your facility with RCPs range of stands and accessories.



FLOOR STANDS

Placing high quality hand hygiene solutions throughout your facility will help your visitors and employees feel safer. Using robust stands that perform in any environment is key to making hand hygiene solutions visible and available at any time.

Rubbermaid Commercial Products Floor Stands are the perfect sanitiser solutions for open, high-traffic areas like lobbies to meet the changing needs of your facility. Floor stands provide constant assurance to the people in your facility and give you peace of mind.

AUTOFOAM HIGH TRAFFIC FLOOR STAND

Offers a robust and premium design to place touch-free dispensers in open, high traffic areas like lobbies and commercial environments.

AUTOFOAM FLOOR STAND

Allows touch-free dispensers to be mounted to a lightweight, easily movable stand to meet the changing needs of commercial facilities

BUILT-IN DRIP TRAY
Eliminates messes that could potentially cause danger and keeps floors clean

OPTIMAL HEIGHT
Allows for quick, convenient access for users on-the-go

EASY INSTALLATION
Two-piece pole design is easy to assemble and can be broken down for convenient storage, as needed

ROBUST DESIGN
Heavy base and pole helps stabilise the hand sanitiser station for secure placement in high traffic areas

LIGHTWEIGHT, TRANSPORTABLE DESIGN
Free-standing floor stand is easily movable to adapt to your needs



| REF | DESCRIPTION | COLOUR | PACK |
|----------|-----------------------------------|--------|------|
| FG750824 | AUTOFOAM HIGH TRAFFIC FLOOR STAND | ● | 1 |
| 2143543 | AUTOFOAM FLOOR STAND | ● | 1 |

POLE MOUNT SOLUTION

Allow both touch-free and manual dispensers to be placed on poles and railings in easily-overlooked spaced like stairwells for convenient access.



DISPENSER COMPATIBILITY

Accommodates:

- AutoFoam Dispensers
- AutoFoam Dispenser with Lumecel
- Manual Foam Dispensers
- Flex 1300ml Dispensers

MOUNTING OPTIONS

Mounts vertically or horizontally on poles between 2 and 5 inches in diameter (5.1 cm and 12.7 cm)

DRIP TRAY

Helps eliminate messes that could potentially cause danger and keeps floors clean

2143454

| REF | DESCRIPTION | COLOUR | PACK |
|---------|---------------------|--------|------|
| 2143454 | POLE MOUNT STATION* | ● | 5 |

*Includes mounting hardware

AUTOFOAM COUNTERTOP STAND

Help encourage proper hand hygiene among facility users and employees with RCP Countertop Stations, which can be easily moved around on flat surfaces like reception desks in high-traffic areas.



LIGHTWEIGHT, PORTABLE STAND

Can be easily moved to clean counters; includes a convenient handle

MULTI-SOLUTION

Works with AutoFoam and AutoFoam with Lumecel dispensers



BUILT-IN DRIP TRAY

Helps eliminate messes on countertops by collecting excess sanitiser

ANTI-SCRATCH PADS

Helps protect flat surfaces from any potential scratches



2143544

| REF | DESCRIPTION | COLOUR | PACK |
|---------|-----------------------------|--------|------|
| 2143544 | AUTOFOAM COUNTERTOP STATION | ● | 5 |



PUMP TOP SANITISER

Pump Top Alcohol Gel Sanitiser

On-the-go hand hygiene keeps facility users safe.



2142037

- Effective In All Environments: Kills 99.99% of most common germs that may be harmful
- 76% Ethanol Formulation: In line with WHO recommendations
- Fragrance-Free: No added fragrance
- Tested for Proven Efficacy: Compliant with EN1500, EN1276 (Bacterias), EN1650 (Yeast) and EN14476 (Enveloped Viruses)

| REF | DESCRIPTION | COLOUR | PACK |
|---------|--------------------------------------|--------|------|
| 2142037 | ALCOHOL GEL SANITISER 500ML PUMP TOP | NA | 6 |

PUMP TOP FLOOR STAND

Expands protection to open areas, beyond just desk spaces.



Sturdy base and pole ensures stand maintains its upright position and is not easily tipped over

| REF | DESCRIPTION | COLOUR | PACK |
|---------|----------------------|--------|------|
| 2151418 | PUMP TOP FLOOR STAND | ● | - |

PUMP TOP WALL HOLDER

Enables protection beyond desks, expanding protection to open areas.



COMPACT DESIGN

Ideal for corridors, next to doors and lifts

Enable protection beyond desks, expanding protection to open areas

BOTTLE COMPATIBILITY

Designed to be used with 2142037 Pump Top Hand Sanitiser

POWDER COATED FINISH

Smooth powder coated finish easily blends into any environment

WALL MOUNTED

Securely attach sanitiser bottles to any wall

| REF | DESCRIPTION | COLOUR | PACK |
|---------|----------------------|--------|------|
| 2151419 | PUMP TOP WALL HOLDER | ● | - |



STARTER PACKS

Kit your washrooms out with a professional-quality solution that delivers better hygiene, improves the user experience and makes your business look good.



| REF | DESCRIPTION | COLOUR | PACK |
|---------|---|--------|------|
| 2127384 | STARTER PACK FOAM HAND WASH TOUCH-FREE (1 SOAP DISPENSER + 2 REFILLS) | ○ | 1 |
| 2127385 | STARTER PACK FOAM HAND WASH MANUAL (1 SOAP DISPENSER + 2 REFILLS) | ○ | 1 |
| 2127386 | STARTER PACK SPRAY HAND WASH MANUAL (1 SOAP DISPENSER + 2 REFILLS) | ○ | 1 |

EXPERIENCE THE **DIFFERENCE**

All our products are designed, built and distributed to out-perform and out-last the competition. Our focus is on saving you money, on protecting your people, and on creating safer and healthier facilities.

Our attractive range of products, dispensers and refills answer every hand hygiene requirement, in every unique situation.



**PEACE OF MIND GUARANTEED AS ALL OUR
DISPENSERS COME WITH A LIFETIME WARRANTY**

RCP offers a lifetime warranty on all washroom dispensers against faulty workmanship and failure in operation when the products are used as directed. Warranty does not apply to products that have been vandalised, or from misuse.





AIR CARE

Enhance the perception and reputation of your facility with RCP's full line of air care solutions. Our dispensing solutions blend into the washroom environment, attack odours at the source, and release fresh-smelling fragrances to create the ultimate sense of cleanliness.





ACTIVE

- Aerosol system relies on valve-actuating mechanism to dispense fragrance automatically
- Programmable dispensing options reduce refill maintenance and waste
- Requires batteries for operation*
- Includes helpful battery and refill life indicators



PASSIVE

- Natural air movement dispenses fragrance
- Operates without batteries
- Non-aerosol system does not include propellants or added volatile organic compounds (VOCs)

DISPENSING SOLUTIONS

One of the first things people notice when entering your facility is the smell. Whether it is the lobby area or a washroom, high quality Air Care products will give your employees and visitors a cleaner and safer feeling. RCP's passive and active Air Care Systems deliver cost-effective odour control with flexible programming, a variety of refills and world class reliability.

AIR CARE REFERENCE GUIDE

Use the following guide to choose the best fragrance dispensing system for your facility:

| DISPENSER TYPE | DISPENSING SYSTEM | DISPENSING TECHNOLOGY | POWER SOURCE | REFILL LIFESPAN | ROOM SIZE COVERAGE | SPRAYS PER REFILL | MAIN BENEFIT |
|----------------|------------------------------|---------------------------------|----------------------------------|--------------------------------|--------------------|-------------------|-------------------------------|
| ACTIVE | MICROBURST 3000 | MICROBURST FINE MIST TECHNOLOGY | ALKALINE BATTERIES (2 C-CELL) | UP TO 90 DAYS OR 3 MONTHS | 169m ³ | 3,000 | SMALL, COMPACT DESIGN |
| ACTIVE | MICROBURST 3000 WITH LUMECEL | MICROBURST FINE MIST TECHNOLOGY | LUMECEL TECHNOLOGY; NO BATTERIES | UP TO 90 DAYS OR 3 MONTHS | 169m ³ | 3,000 | REQUIRES NO BATTERIES |
| ACTIVE | MICROBURST DUET | MICROBURST FINE MIST TECHNOLOGY | ALKALINE BATTERIES (2 C-CELL) | UP TO 180 DAYS OR 6 MONTHS | 169m ³ | 3,000 | DUAL- FRAGRANCING |
| ACTIVE | STANDARD AEROSOL | SMART CHIP TECHNOLOGY | ALKALINE BATTERIES (2 D-CELL) | UP TO 90 DAYS OR 3 MONTHS | 169m ³ | 3,000 | ECONOMICAL OPTION |
| PASSIVE | TCELL | HYDROGEN FUEL CELL TECHNOLOGY | BATTERY-FREE | 60 OR 90 DAYS, OR 2 / 3 MONTHS | 169m ³ | N/A | NO PROPELLANTS OR ADDED VOC'S |

*except MicroBurst 3000 with Lumecel Technology

FRAGRANCE

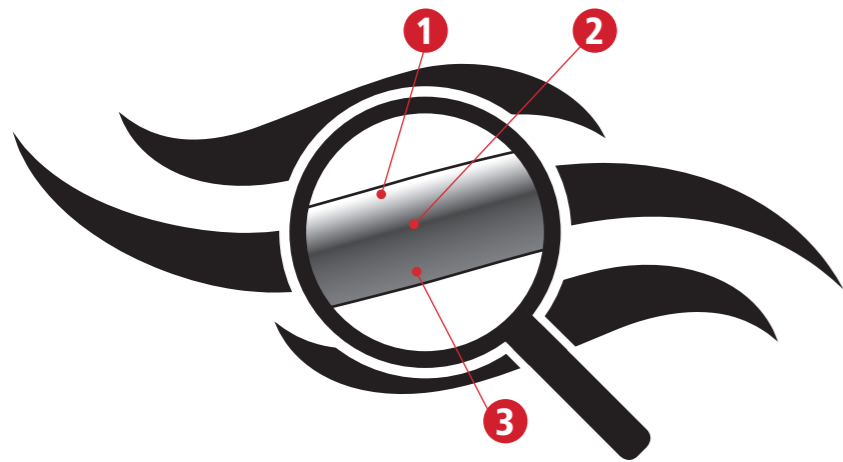
EDUCATION

Fragrance can reinforce the feeling of cleanliness and freshness in the washroom; 77%* of facility users that experience a business with unpleasant washroom smells leave with a negative perception of the business. RCP offers a full line of air care options that can help you create a positive experience.

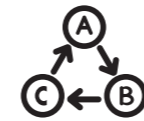


LEARN THE COMPOSITION

Fragrances are made up of three main "notes" that help to create a blended scent.



- 1 TOP NOTES:**
Also known as "head notes," serve as the first impression you get from the fragrance.
- 2 MIDDLE NOTES:**
The "heart," or main body of the fragrance, that gives the fragrance its character.
- 3 BOTTOM NOTES:**
The base, which tends to be heavier and fuller, giving the fragrance its strength.



KNOW THE FRAGRANCE FAMILIES

RCP's fragrance options fall within six distinct fragrance families, based upon their scents:



FLORAL

Characterised by:
Radiant scents, such as rose, jasmine, and violet; green scents, which are reminiscent of freshly cut grass, leaves, and stems.



FRUITY

Characterised by:
Luscious fruity scents, such as apple, pear, plum, mango, peach, and melon.



CITRUS

Characterised by:
Invigorating and uplifting scents, such as lemon, mandarin, and other citrus oils.



HERBAL

Characterised by:
Powerful, aromatic herbal scents, such as rosemary, mint, coriander, lavender, and sage.



FOUGÈRE

Characterised by:
Masculine scents, such as lavender, moss, and woods.



GOURMAND

Characterised by:
Mouth-watering, edible scents, and sweet, comforting vanilla.

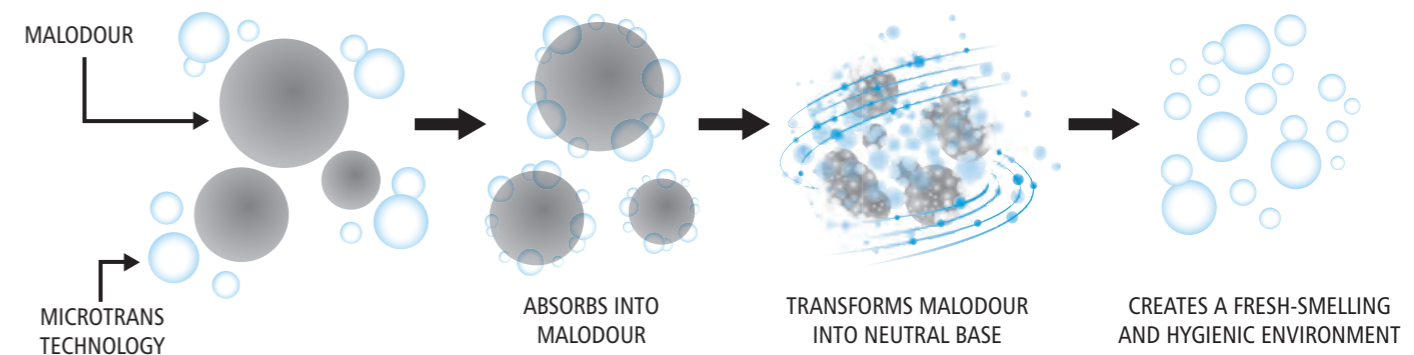


WHAT SETS RCP FRAGRANCES APART

Traditional air fresheners only camouflage malodours; all of RCP's fragrance options have Microtrans® technology, which attacks and effectively eliminates unavoidable odours in the washroom. Thus, completing two jobs in one – removing odours and creating fresh-smelling environments.

MICROTRANS ODOUR NEUTRALISER TECHNOLOGY

Locks onto malodour molecules to neutralise the odour.



*Source: The State of Air Care, Initial Hygiene, 2017



TCell™

Battery-free Passive Odour Control System

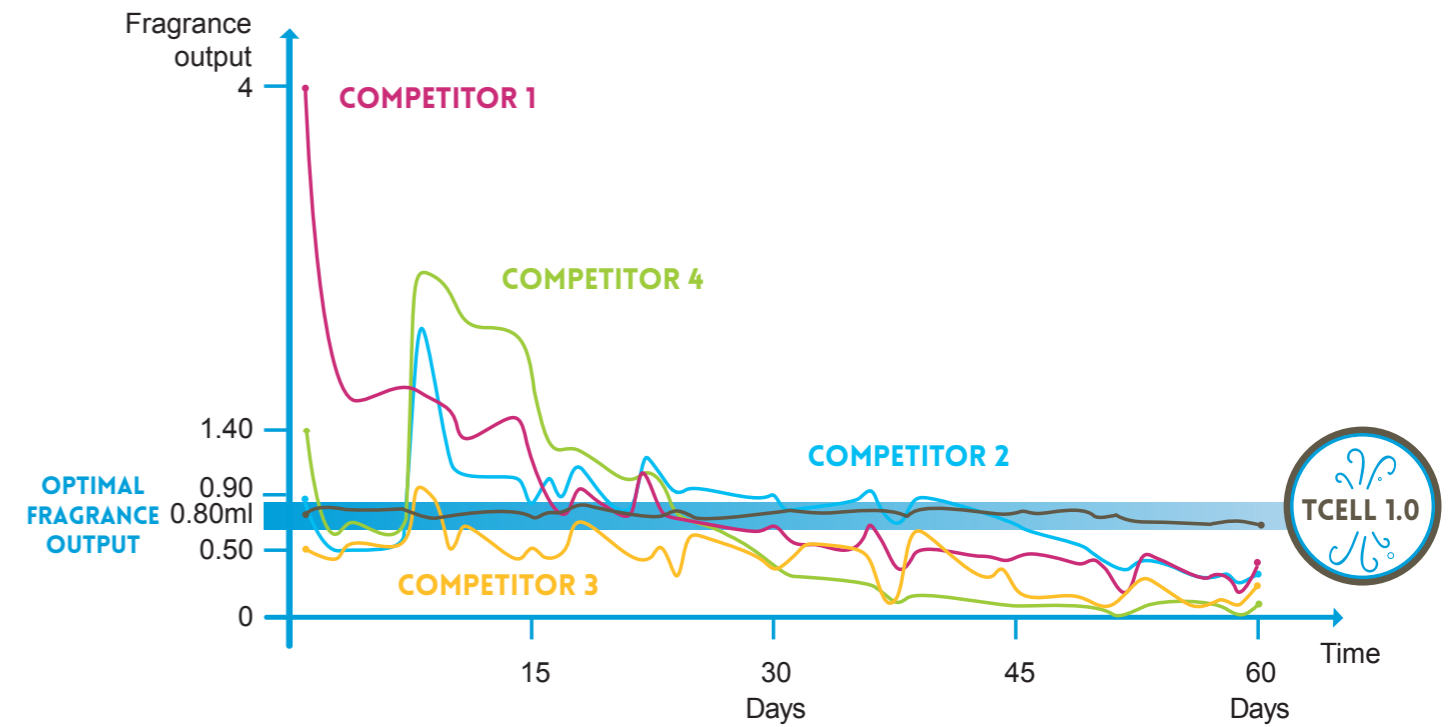
TCELL™ 1.0 DISPENSERS & REFILLS



1817146

- 1 ONLY PASSIVE SYSTEM DELIVERING CONSISTENT FRESH SMELL FOR FULL 60 DAYS**
Unlike competitor products, the TCell 1.0 patented fuel cell maintains a consistent output of fragrance over the life of the refill.
- 2 IDEAL FOR ALL SPACES**
Range of fragrances for washroom environments as well as office space, hospitality and education facilities.
- 3 BATTERY-FREE OPERATION**
Passive fuel cell technology consistently delivers odour-neutralising fragrance without the need for batteries.

TCell 1.0 is a discreet and effective passive air freshening system for an all day, every day fresh environment. It utilises advanced fuel cell technology to deliver a precise, timed dose of high-quality fragrance for up to 60 days.



- Only passive system delivering consistent fresh smell for a full 60 days.
- Cost-effective air care solution that instantly enhances the image of any environment.
- Range of 7 user-preferred fragrances for any environment.
- Modern design, silent and battery-free operation.
- One dispenser covers up to 169m³ (3 to 4 toilets cubicles in a washroom environment).

| REF | DESCRIPTION | COLOUR | PACK |
|---------|----------------------|--------|------|
| 1817146 | TCELL™ 1.0 DISPENSER | ○ | 10 |

TCell™ 1.0 Refills



| REF | DESCRIPTION | FAMILY | INTENSITY | FRAGRANCE DESCRIPTION |
|----------|------------------|---------|-----------|---|
| 1836521 | RELAXING SPA | SPA | ** | Calming herbal notes of chamomile and lavender intertwined with a soothing blend of musk, amber and orchid. |
| R402304E | CRYSTAL BREEZE | HERBAL | ** | Icy fresh herbal aroma with eucalyptus, lavender and methol. |
| R402305E | BLUE SPLASH | FOUGERE | *** | Cool and clean fragrance infused with fresh, watery marine notes. |
| R402306E | POLAR MIST | HERBAL | ** | Aromatic herbal accord revealing notes of freshly cut lavender and wild mint. |
| R402308E | CITRUS MIX | CITRUS | *** | Invigorating citrus fusion of orange, lemon and grapefruit. |
| R402311E | TROPICAL SUNRISE | FRUITY | ** | Tropical fruit fusion with pineapple sweetened by hints of melon, guava, mango and passion fruit. |
| R402313E | FRUIT CRUSH | FRUITY | ** | Vibrant cocktail of juicy fruits combined with lyse, rose and cyclamen. |

* low ** medium *** strong



MICROBURST® 3000 DISPENSERS

Microburst® 3000 with LumeCel™

The Microburst® 3000, powered by the revolutionary LumeCel™ rechargeable energy system, offers flexible programming and powerful odour control.



2095208 (Chrome)



2095206 (Black)



2095207 (White)

- Sleek high-performance aerosol dispenser powered by any indoor light source using LumeCel technology.
- LumeCel renewable energy cell technology recharges by capturing energy from regular indoor lighting.
- Alkaline battery free, eliminating the need to store, use and dispose of traditional batteries.

| REF | DESCRIPTION | COLOUR | PACK |
|---------|--|--------|------|
| 2095206 | MICROBURST® 3000 DISPENSER WITH LUMECEL™ TECHNOLOGY - BLACK | ● | 6 |
| 2095207 | MICROBURST® 3000 DISPENSER WITH LUMECEL™ TECHNOLOGY - WHITE | ○ | 6 |
| 2095208 | MICROBURST® 3000 DISPENSER WITH LUMECEL™ TECHNOLOGY - CHROME | ● | 6 |

Microburst® 3000 LCD Dispensers

Microburst® 3000 aerosol odour control systems deliver a cost-effective, programmable solution with all the power and performance of standard dispensers.



1817131 (White)

- Sleek, compact high-performance aerosol system in half the size of standard dispensers.
- Flexible programming options include 12/24 hours per day and 5, 6, or 7 days per week.
- Proactive display notifies users when to change the refill and battery.

| REF | DESCRIPTION | COLOUR | PACK |
|---------|--|--------|------|
| 1817131 | MICROBURST® 3000 LCD DISPENSER - WHITE | ○ | 6 |

MICROBURST® 3000 REFILLS

Microburst® 3000 refills feature high quality, fresh fragrances that last for 3000 sprays or up to 90 days.

- Wide range of customer-preferred fragrances.
- Pharmaceutical-grade steel delivers Microtrans odour neutraliser to terminate odours with a variety of air freshening fragrances in the industry's finest mist.
- Compact refills require less storage, space and produce less waste.



| REF | DESCRIPTION | FAMILY | INTENSITY | FRAGRANCE DESCRIPTION |
|----------|-----------------|-----------|-----------|--|
| 1910726 | PURIFYING SPA | SPA | * | A crisp, floral notes of white lily, rose, and jasmine that harmonise with soft sandalwood and lemon grass oils. |
| 1910727 | RELAXING SPA | SPA | * | A calming herbal notes of chamomile and lavender intertwined with a soothing blend of musk, amber, and orchid. |
| 1910728 | ENERGISING SPA | SPA | * | A revitalising citrus fusion of mandarin leaf and pomelo enhanced with the essential oils of bergamot and lime. |
| 1904007 | ANTICIPATION | FRUITY | ** | A fresh, crisp apple fragrance. |
| R0260037 | DISCRETION | FRUITY | *** | An exotic fruity fragrance enhanced by juicy mango and cool melon. |
| 1910730 | IMPRESSIONS | FLORAL | *** | A floral fragrance enriched by hints of musk and amber. |
| R0260007 | INSPIRATIONS | FLORAL | * | A rich, white floral accord with notes of jasmine, tuberose and freesia. |
| R0260017 | SENSATIONS | FLORAL | *** | A sweet floral accord enhanced by nuances of vanilla and coconut. |
| R0260028 | DEVOTION | FLORAL | ** | A delicate floral fragrance harmonised by powdery notes and soft vanilla. |
| R0260040 | RADIANT SENSE | FLORAL | * | A vibrant floral fragrance where notes of gardenia and ylang are intertwined with juicy fruits. |
| R0260052 | ISLAND COCKTAIL | GOURMANDE | *** | A Caribbean cocktail blending juicy pineapple and creamy coconut. |

| REF | DESCRIPTION | FAMILY | INTENSITY | FRAGRANCE DESCRIPTION |
|----------|-------------------|-------------------|-----------|---|
| R0260001 | PERCEPTIONS | ORIENTAL | ** | A captivating woody accord revealing notes of patchouli, vetivert and sandalwood. |
| R0260026 | ESSENCE OF OUDH | ORIENTAL | ** | A rich, exotic Arabic infusion of rose and saffron combined with oudh, amber and sandalwood. |
| R0260050 | KILIMANJARO | ORIENTAL | *** | An alluring blend enriched by warm spices and aromatic herbs. |
| R0260004 | EXPRESSIONS | CITRUS | ** | A sparkling citrus aroma revealing notes of orange, lemon, grapefruit and mandarin. |
| R0260041 | CLEAN SENSE | CITRUS | * | A refreshing citrus blend with notes of juicy orange and zesty lime. |
| R0260042 | VIBRANT SENSE | CITRUS | * | A vibrant citrus aroma lifted by fresh fruity accents. |
| R0260043 | TRANQUIL SENSE | CITRUS | * | A radiant citrus blend enlivened by succulent fruity hints of peach and mango. |
| R0260053 | RAIN FOREST | HERBAL | ** | A strong, fresh aroma combining green leafy notes and succulent berries. |
| 1910753 | ILLUSIONS | FOUGERE | * | A spicy fougere aroma intensified by woody undertones. |
| R0260056 | ICE AGE | FOUGERE | ** | A fresh fougere fragrance lifted by cool mint and sparkling citrus accents. |
| R0260018 | ODOUR NEUTRALISER | ODOUR NEUTRALISER | NA | An odour neutraliser that eliminates tobacco, musty damp smells, wet paint, dry cleaning, body and animal odours. |

* low ** medium *** strong

MICROBURST® DUET REFILLS

Microburst® Duet Refills

Microburst® Duet features a dual-fragrance odor control system that alternates between two complementary scents.



1910756



1910758



1910729



1910757



1910759

- Alternating scents eliminate fragrance fatigue.
- Unique combination of specially selected, high quality, complementary fragrances.
- Easy, flexible programming.

| REF | DESCRIPTION | FAMILY | INTENSITY | FRAGRANCE DESCRIPTION |
|---------|---------------------------------|------------------|-----------|--|
| 1910729 | PURIFYING & RELAXING SPA | FLORAL & CITRUS | * | The revitalising citrus scent of Energising Spa is paired with the cool crisp floral aroma of Purifying Spa |
| 1910756 | TENDER FRUITS & CITRUS LEAVES | CITRUS & HERBAL | *** | The crisp citrus of Tender Fruits provide a lively contrast to the herbal elements of Citrus Leaves |
| 1910757 | SPARKLING FRUITS & COTTON BERRY | FRUITY & FLORAL | *** | The captivating fruity blend in Sparkling Fruits provides a dynamic contrast to red berries and florals in Cotton Berry. |
| 1910758 | FLORAL CASCADE & VIBRANT SENSE | CITRUS & FLORAL | ** | The ever popular citrus fragrance Vibrant Sense is paired with the green floral bouquet of Floral Cascade. |
| 1910759 | CLEAN SENSE & COOL BREEZE | CITRUS & FOUGERE | * | The cool watery tones of Cool Breeze present a striking contrast to the zesty citrus notes in Clean Sense |
| 1910760 | MIXED PACK | NA | NA | 1 of each fragrance duo |

* low ** medium *** strong



STANDARD AEROSOL DISPENSERS

Standard Aerosol LCD Dispensers



1817138
(White)

The Standard Aerosol System delivers fragrance and odour neutraliser automatically, keeping washrooms appearing clean and fresh 24-hours a day.

- Ideal for tailored operation with advanced dispensing programme settings.
- Each refill will always deliver 3,000 metered spray, whatever the setting.
- Long refill life - up to 90 days.
- Long lasting fragrance intensity that washroom users will notice.
- High quality, fresh fragrances that effectively eliminate bad odours.

| REF | DESCRIPTION | COLOUR | PACK |
|---------|---|--------|------|
| 1817138 | STANDARD AEROSOL LCD DISPENSERS - WHITE | ○ | 6 |

Standard Aerosol LED Dispensers



1817134
(White)

The Standard Aerosol System delivers fragrance and odour neutraliser automatically, keeping washrooms appearing clean and fresh 24-hours a day.

- Ideal for adjusting fragrance levels according to room requirements.
- Each refill will always deliver 3,000 metered spray, whatever the setting.
- Day, Night, & 24 hr programming option.
- Long lasting fragrance intensity that washroom users will notice.
- High quality, fresh fragrances that effectively eliminate bad odours.

| REF | DESCRIPTION | COLOUR | PACK |
|---------|---|--------|------|
| 1817134 | STANDARD AEROSOL LED DISPENSERS - WHITE | ○ | 6 |

STANDARD AEROSOL REFILLS

The Standard Aerosol refills feature high quality, fresh fragrances that effectively eliminate bad odours.

- Long lasting fragrance intensity that washroom users will notice.
- Selection of 9 customer-preferred fragrances to choose from.



| REF | DESCRIPTION | FAMILY | INTENSITY | FRAGRANCE DESCRIPTION |
|----------|-------------------|------------------|-----------|--|
| R0220002 | IMPRESSIONS | FLORAL | *** | A floral fragrance enriched by hints of musk and amber. |
| R0220040 | RADIANT SENSE | FLORAL | * | A vibrant floral fragrance where notes of gardenia and ylang are intertwined with juicy fruits |
| R0220041 | CLEAN SENSE | CITRUS | * | A refreshing citrus blend with notes of juicy orange and zesty lime |
| R0220042 | VIBRANT SENSE | CITRUS | * | A vibrant citrus aroma lifted by fresh fruity accents |
| R0220004 | EXPRESSIONS | CITRUS | ** | A sparkling citrus aroma revealing notes of orange, lemon, grapefruit and mandarin |
| R0220003 | ANTICIPATION | FRUITY | ** | A fresh, crisp apple fragrance |
| R0220027 | MARINE | FOUGERE | ** | A cool, clean accord infused with fresh, watery marine notes |
| R0220018 | ODOUR NEUTRALISER | ODOR NEUTRALISER | NA | An odour neutraliser that eliminates tobacco, musty damp smells, wet paint, dry cleaning, body and animal odours |
| R0220052 | ISLAND COCKTAIL | GOURMANDE | *** | A Caribbean cocktail blending juicy pineapple and creamy coconut |

* low ** medium *** strong

STANDARD AEROSOL ACCESSORIES

The Microburst® Refill Conversion Shelf allows MB3000 cans to be used in a Standard 243ml dispensers. It is recommended that a R0650016 is fitted to a R0610004 to ensure the can sits at the correct height.



| REF | DESCRIPTION | COLOUR | PACK |
|----------|---------------------------------------|--------|------|
| R0610004 | MICROBURST® REFILL CONVERSION ADAPTOR | NA | 6 |
| R0650016 | MICROBURST® REFILL CONVERSION SHELF | NA | 6 |



SURFACE CARE

Improve the cleanliness of your facility with RCP's surface care solutions. Our cleaning systems dispense formulas that help to provide a high standard of clean for washroom surfaces.





Clean Seat

Clean washroom surfaces with a convenient wall-mounted dispensing system.

CLEAN SEAT DISPENSERS



FG402310

- 1 ANTIMICROBIAL PUSHBAR**
Utilises a silver-ion coating that helps reduce cross-contamination
- 2 CONVENIENT USE**
Dispense the solution on bath tissue and wipe down surfaces
- 3 VIEWING WINDOW**
Allows maintenance staff to monitor when to replace refills
- 4 ALCOHOL-BASED REFILL**
Quick-drying formula cleans surfaces

Mount anywhere in the washroom to remove dirt and grime on surfaces, such as toilet seats and baby changing stations.

Clean Seat Foam 400 ml Dispenser



Toilet seat cleaner dispensers improve hygiene standards and provide an added level of comfort to users. Easy to apply alcohol-based formulation that dries quickly.

- Dispenser with antimicrobial push bar with silver-ion technology reduces cross-contamination.
- Dispenser compatible with foam refill formula.

| REF | DESCRIPTION | COLOUR | PACK |
|----------|---|--------|------|
| FG402310 | CLEAN SEAT DISPENSER - FOAM 400ML - WHITE | | 12 |

Clean Seat Spray or Foam 400 ml Dispenser



1853850

1855204

Toilet seat cleaner dispensers improve hygiene standards and provide an added level of comfort to users. Easy to apply alcohol-based formulation that dries quickly.

- Dispenser compatible with spray refill formula.

| REF | DESCRIPTION | COLOUR | PACK |
|---------|--|--------|------|
| 1853850 | CLEAN SEAT DISPENSER - SPRAY 400ML WHITE/GREY | | 12 |
| 1855204 | CLEAN SEAT DISPENSER - FOAM 400ML - WHITE/GREY | | 12 |

CLEAN SEAT REFILLS

Toilet seat cleaner dispensers improve hygiene standards and provide an added level of comfort to users. Easy to apply alcohol-based formulation that dries quickly.



RVU3817



RVU9503



1884002

- Alcohol-based solution removes dirt and debris and eliminates the need for messy and awkward seat covers

| REF | DESCRIPTION | VOLUME | PACK |
|---------|---|--------|------|
| RVU3817 | CLEAN SEAT REFILL SPRAY | 400 ML | 12 |
| RVU9503 | CLEAN SEAT REFILL FOAM | 400 ML | 12 |
| 1884002 | CLEAN SEAT REFILL FOAM FOR FLEX DISPENSER | 500 ML | 12 |

CLEAN SEAT STARTER PACK

The Toilet Seat Cleaner Starter Pack includes one Manual Toilet Seat Cleaner White dispenser and 2 spray refills. The Toilet Seat Cleaner improves hygiene standards while providing an extra level of comfort for users.

WHAT'S IN THE BOX:

- 1x 1853850 - Spray Seat & Handle Cleaner Spray dispenser White
- 2x RVU3817 : Spray Seat & Handle Cleaner refill



- Kit your washrooms out with a professional-quality solution that delivers better hygiene, improves the user experience and makes your business look good.

| REF | DESCRIPTION | VOLUME | PACK |
|---------|----------------------------------|--------|------|
| 2127387 | STARTER PACK TOILET SEAT CLEANER | 400 ML | 12 |

AUTOCLEAN® DISPENSER & REFILLS

AutoClean® LCD Dispenser

Year Warranty
3

AutoClean® dispensers automatically dispense measured doses of a powerful cleaning and hygiene solution, cleaning both visible surfaces and out-of-sight areas like pipes and drains, keeping toilets and urinals clean, fresh, and presentable.



1817138
(White)

- Automated toilet and urinal cleaning that reduces and prevents scale and stains on surfaces.
- Easy in-line installation allows cleaning solution to reach the hard to clean areas, such as rim holes, ensuring that the whole fixture is cleaned.
- Eliminates bad odours at source and helps to maintain an odour-free environment.
- Flexible programming options: up to 90 day refill cycle settings.

| REF | DESCRIPTION | COLOUR | PACK |
|---------|----------------------------------|--------|------|
| 1817010 | AUTOCLEAN® LCD DISPENSER - WHITE | ○ | 6 |

AutoClean® Refills

AutoClean® dispensers can be used with 4 different refills:



R0520105

R0520109

2115054

R0520126

- Purinel refills concentrated foam removes unsightly surface stains, attacks hard water deposits and prevents scale and stains from forming.
- Purinel Cherry BubbleGum features in addition a strong fragrance and blue dye to reinforce the cleanliness of the washroom.
- BioPurinel concentrated Bio formula deals specifically with uric-scale build-up, a major cause of bad odours in washrooms.

| REF | DESCRIPTION | VOLUME | PACK |
|----------|--|--------|------|
| R0520105 | AUTOCLEAN® REFILLS - PURINEL | 300 ML | 6 |
| R0520109 | AUTOCLEAN® REFILLS - PURINEL WITH ORANGE FRAGRANCE | 300 ML | 6 |
| 2115054 | AUTOCLEAN® REFILLS - PURINEL CHERRY BUBBLEGUM | 300 ML | 6 |
| R0520126 | AUTOCLEAN® REFILLS - BIO-PURINEL | 300 ML | 6 |

AUTOJANITOR® DISPENSER & REFILLS

AutoJanitor® Dispenser

Year Warranty
3

AutoJanitor® cleans and deodorises toilets and urinals while providing a clean fresh scent for the restroom.



1817013

- Programmable dispenser operates round-the-clock automatically cleaning fixture surfaces, day and night, at 15, 30, or 60 day refill cycles
- An easy-to-install cleaning system that elevates the level of cleanliness in the washroom.

| REF | DESCRIPTION | COLOUR | PACK |
|---------|---------------------------------|--------|------|
| 1817013 | AUTO JANITOR® DISPENSER - WHITE | ○ | 6 |

AutoJanitor® Refills

Last up to 60 days, or two months, based on program settings



1910759



1910759



1910729



1910757



1910759



1910759

| REF | DESCRIPTION | VOLUME | PACK |
|----------|---|--------|------|
| R0410804 | AUTO JANITOR® BIOSENSE REFILL - MANDARIN ORANGE | 600 ML | 6 |
| R0420804 | AUTO JANITOR® CLEANER & DEODORISER REFILLS - EXPRESSIONS | 600 ML | 6 |
| R0420815 | AUTO JANITOR® CLEANER & DEODORISER REFILLS - REFLECTION | 600 ML | 6 |
| R0420844 | AUTO JANITOR® CLEANER & DEODORISER REFILLS - VIBRANT SENSE | 600 ML | 6 |
| R0420846 | AUTO JANITOR® CLEANER & DEODORISER REFILLS - CELEBRATIONS | 600 ML | 6 |
| R0420873 | AUTO JANITOR® CLEANER & DEODORISER REFILLS - MEDITERRANEAN CITRUS | 600 ML | 6 |

SURFACE CLEANER

Purinel Bio is a hard surface cleaner combining cleaning with odour removal and helps to control the growth of microorganisms. Features biodegradable surfactants, friendly bacterias and fresh fragrance to remove the biofilm, source of organic waste build-up and odours hidden deep in floor and wall grout lines.



- Cuts down on cleaning time and material costs.
- 70 million CFUs per concentrated ml - keeps working after being applied and mop water disposed of after cleaning through the drain continues the bioactive cleaning.
- Enzyme technology breaks down the bacteria in the accumulating uric scale, without the use of harsh or corrosive chemicals.
- Suitable for use on all walls, floors and hard surfaces in a multitude of public and commercial washroom settings.

| REF | DESCRIPTION | VOLUME | PACK |
|---------|----------------------------------|--------|------|
| 2127387 | STARTER PACK TOILET SEAT CLEANER | 5 L | 12 |



WASHROOM ACCESSORIES

Provide comfort and convenience for patrons with RCP's washroom accessories. Our baby changing stations and sanitary receptacles and bins blend into the environment and keep your washroom safe and hygienic.





Baby Changing Station

Offers a safe baby changing solution with best-in-class durability and convenience.

BABY CHANGING STATIONS & ACCESSORIES



FG781888LPLAT

- 1 HYGIENIC PROTECTION**
Antimicrobial surface helps reduce the risk of cross-contamination
- 2 ERGONOMIC DESIGN**
Opens conveniently with one hand, so guests can also hold baby and supplies
- 3 ACCESSORY SHELF**
Keeps essentials nearby, but safely out of baby's reach
- 4 LINER HOLDER**
Built-in, easy-to-service dispenser holds up to 40 disposable liquid-barrier liners
- 5 EASY-REACH HOOKS**
Securely holds diaper bags, purses, and supplies

Baby Changing Station

Provides a secure changing station made from durable molded polypropylene for the convenience of guests with small children.



FG781988LPLAT

- Antimicrobial surface helps reduce the risk of cross-contamination.
- Ergonomic design that opens conveniently with one hand, so guests can also hold baby and supplies.
- Meets all global ASTM, ADA, EN safety standards.
- Easy-reach hooks and accessory shelf to keep essentials nearby and hold supplies.

| REF | DESCRIPTION | COLOUR | PACK |
|---------------|------------------------------------|--------|------|
| FG781888LPLAT | BABY CHANGING STATION - HORIZONTAL | ○ | 1 |
| FG781988LPLAT | BABY CHANGING STATION - VERTICAL | ○ | 1 |

Baby Changing Station Liners

RCP Baby Changing Table Pad fits many sizes of baby changing stations and features 2-ply construction for durability and antimicrobial protection.



- Fits many baby stations to allow for easy cleaning.
- Laminated 2-ply construction for maximum absorption and antimicrobial protection
- Absorbs liquid to increase the life of the baby changing table
- Box comes with 320 baby changing pads

| REF | DESCRIPTION | COLOUR | PACK |
|-------------|------------------------------|--------|------|
| FG781788WHT | BABY CHANGING STATION LINERS | ○ | 1 |

SANITARY BINS & LINERS

Sanitary Bins 12L

High capacity bins for disposing of used nappies.



RMINIPDSBF



RMINIPEDWF

- High capacity discretion chute deals efficiently with bulky waste.
- Features a smooth contoured shape that allows for easy cleaning.

| REF | DESCRIPTION | COLOUR | PACK |
|------------|--------------------------------|--------|------|
| RMINIPEDWF | SANITARY BIN 12L - WHITE | ○ | 4 |
| RMINIPDSBF | SANITARY BIN 12L - SATIN/BLACK | ○● | 4 |

Sanitary Bins 20L

Designed to provide a safe and hygienic way to dispose of sanitary waste.



R039016



FG402338

- An easy to access foot pedal enables hands-free trash disposal, and a deep chute helps prevent trash from getting stuck.
- Features a smooth contoured shape that allows for easy cleaning.

| REF | DESCRIPTION | COLOUR | PACK |
|----------|--------------------------|--------|------|
| FG402338 | SANITARY BIN 20L - WHITE | ○ | 4 |
| R039016 | SANITARY BAG REFILLS | ○ | 4 |

SANITARY BINS & LINERS

Nappy bin pedal-operated

High capacity bins for disposing of used nappies.



- High capacity discretion chute deals efficiently with bulky waste.
- Smooth surfaces that are easy to clean.
- Designed to fit under standard height worktops.
- Incorporates handles for easy carrying.

| REF | DESCRIPTION | COLOUR | PACK |
|-----------|---------------------------------------|--------|------|
| RNAP2PEDY | NAPPY BIN PEDAL-OPERATED 65L - YELLOW | ● | 4 |

Sanitary Napkin Receptacle with Rigid Liner

The Sanitary Napkin Receptacle is space efficient and easy to service.



FG6141000000



FG614000WHT

- Features a tight-fitting lid to contains odors.
- Removable rigid liner is easy to clean and maintain.

| REF | DESCRIPTION | COLOUR | PACK |
|--------------|--|--------|---------|
| FG614000WHT | SANITARY NAPKIN RECEPTACLE WITH RIGID LINER | ○ | 1 |
| FG6141000000 | WAXED BAGS FOR SANITARY NAPKIN RECEPTACLE 50 BAGS/BUNDLE | ○ | 1 (250) |

MODESTY CARRYING BAGS

Single-bin Carrying Bag Two-bin Carrying Bag

Carrying bag for discreet and safe removal of sanitary and nappy waste.



RMOD1



RMOD2

- Smooth surfaces are easy to clean and help optimise sanitary efforts.
- Ideal for hospitals, doctor's offices and other healthcare facilities.
- FM-Certified
- Foot pedal enables hands free operation

| REF | DESCRIPTION | COLOUR | PACK |
|-------|-------------------------|--------|------|
| RMOD1 | SINGLE-BIN CARRYING BAG | ● | 1 |
| RMOD2 | TWO-BIN CARRYING BAG | ● | 1 |

SAFTI-GRIP® BATH AND SHOWER MATS

Safti-Grip® Bath Mats

Safti-Grip® Bath Mat is perfect for a shower stall or bathtub. Suction-backed to stay firmly in place. Latex-free construction. Textured surface prevents slippage. Shower mat is perforated for improved drainage. Mildew-resistant.



- Suction-backed to stay firmly in place.
- Latex-free construction.
- Textured surface prevents slippage
- Shower mat is perforated for improved drainage
- Mildew-resistant

| REF | DESCRIPTION | COLOUR | PACK |
|---------|-------------------------------------|--------|------|
| 1982724 | SAFTI-GRIP® BATH MAT, MEDIUM, WHITE | ○ | 4 |



WASTE MANAGEMENT

Improving recycling effectiveness has a positive environmental impact, helps facilities achieve sustainability initiatives, and can lead to cost savings. In-field trials that utilised coloured containers, labels, lids with stream-specific openings proved to increase recycling effectiveness.



BUY BETTER, WASTE LESS

At Rubbermaid Commercial Products (RCP), product durability is part of our DNA. Our waste management solutions are designed to stand the test of time, meaning less re-manufacture, less transport, and less storage than lower quality alternatives that frequently need replacing.

All of which is better for the planet.

By partnering with RCP for waste management solutions, you are encouraging your business to waste less and be more sustainable. Firstly, by using a highly durable product that lasts for years to come. Secondly, by encouraging your facility users to separate waste at the start of its journey, increasing recycling and reducing contribution to landfills. All our waste solutions come with long-term warranties that provide you with added peace of mind.



BUY BETTER
WASTE LESS
LOVE RECYCLING



loverecycling.com

Let's do this together



Step-On Containers

Safely collect waste with touch-free closed lid containers



SLIM JIM® STEP-ON CONTAINERS



1883575

- 1 REDESIGNED LID:**
New lid is made of additional resin and fully overhangs the base for better fitting
- 2 SILENT CLOSING SYSTEM:**
Quiet and controlled lid closure reduces noise
- 3 EASY TO MAINTAIN:**
Smooth surfaces & contoured edges are easy to maintain
- 4 HIGHLY DURABLE PEDAL:**
Large pedal has been tested up to 300'000 cycles

- Premium quality construction ensures product durability in highly demanding environments
- All Slim Jim Step On Containers come with a 5 year warranty for added peace of mind
- Tight-fitting lid has a controlled closure system to reduce noise
- Internal hinge design prevents wall damage
- Slimmer footprint container includes contoured edges and smooth surfaces
- Multiple sizes, formats and colours



SLIM JIM® STEP-ON RESIN CONTAINERS

| DESCRIPTION | BEIGE | WHITE | RED | YELLOW | GREY | BLACK | BLUE | DIMENSIONS (CM) | PACK |
|-------------------------|---------|---------|---------|---------|---------|---------|---------|-----------------------|------|
| RESIN FRONT STEP-ON 15L | 1883455 | 1883554 | 1883563 | - | - | 1883608 | - | 37.67 x 23.04 x 39.88 | 1 |
| RESIN FRONT STEP-ON 30L | 1883456 | 1883555 | 1883564 | 1883573 | 1883600 | 1883609 | - | 42.49 x 27.05 x 53.59 | 1 |
| RESIN FRONT STEP-ON 50L | 1883458 | 1883557 | 1883566 | 1883575 | 1883602 | 1883611 | - | 45.64 x 29.16 x 71.88 | 1 |
| RESIN FRONT STEP-ON 68L | 1883460 | 1883559 | 1883568 | 1883577 | 1883604 | 1883613 | - | 49.96 x 31.06 x 80.26 | 1 |
| RESIN FRONT STEP-ON 90L | 1883552 | 1883561 | 1883570 | 1883579 | 1883606 | 1883615 | 1883597 | 57 x 35.28 x 82.55 | 1 |
| RESIN END STEP-ON 30L | 1883457 | | 1883565 | | | - | | 49.66 x 31.14 x 56.57 | 1 |
| RESIN END STEP-ON 50L | 1883459 | | | | | 1883612 | | 52.71 x 34.34 x 72.09 | 1 |
| RESIN END STEP-ON 68L | 1883551 | | | | | - | | 56.16 x 37.34 x 78.13 | 1 |
| RESIN END STEP-ON 90L | 1883553 | | | | | - | | 63.73 x 40.31 x 81.33 | 1 |

SLIM JIM® STEP-ON STAINLESS STEEL CONTAINERS

| REF | DESCRIPTION | DIMENSIONS | CAPACITY | COLOUR | PACK |
|-------------------|---------------------------------------|-----------------------|----------|--------|------|
| 1901982 | METAL FRONT STEP-ON | 39.57 x 30.23 x 39.95 | 15L | ● | 1 |
| 1901985 (1901987) | RESIN FRONT STEP-ON (WITH DUAL LINER) | 42.75 x 32.59 x 55.52 | 30L | ● | 1 |
| 1901992 (1901994) | RESIN FRONT STEP-ON (WITH DUAL LINER) | 46 x 34.80 x 72.80 | 50L | ● | 1 |
| 1901999 (1902001) | RESIN FRONT STEP-ON (WITH DUAL LINER) | 55.35 x 41.25 x 80.85 | 90L | ● | 1 |
| 1901993 | METAL END STEP-ON | 57.58 x 29.46 x 73.28 | 50L | ● | 1 |
| 1902000 | METAL END STEP-ON | 69.01 x 33.27 x 83.41 | 90L | ● | 1 |

LEGACY STEP-ON



The Legacy Step-On Container provides sanitary waste management.



FG614300BEIG FG614400WHT FG614500RED FG614600BEIG

- Integrated lid damper keeps odours and bacteria from escaping
- All-plastic construction
- Heavy-duty pedal for hands-free disposal
- Provided with a 5 year warranty

| DESCRIPTION | CAPACITY | BEIGE | WHITE | RED | DIMENSIONS (CM) | PACK |
|--------------------------|----------|--------------|-------------|-------------|------------------|------|
| STEP-ON CONTAINER | 30 L | FG614300BEIG | FG614300WHT | FG614300RED | 40.5 x 40 x 43 | 1 |
| STEP-ON CONTAINER | 45 L | FG614400BEIG | FG614400WHT | FG614400RED | 40.5 x 40 x 60 | 1 |
| STEP-ON CONTAINER | 68 L | FG614500BEIG | FG614500WHT | FG614500RED | 41.3 x 40 x 60 | 1 |
| STEP-ON CONTAINER MOBILE | 87 L | FG614600BEIG | FG614600WHT | FG614600RED | 50.2 x 41 x 82.6 | 1 |

DEFENDERS®



Metal Step on containers safely and hygienically collect waste.



FGST24SSPL FGST24EPLRD FGST40EPLWH

- Hands-free operation with foot pedal
- Restraint mechanism protects against wall damage
- Leak-proof rigid plastic liner helps contain liquids
- Retainer bands discreetly hold liner bags and keep bags out of sight
- Heavy-gauge, fire-safe steel for lasting durability in high traffic areas
- Provided with a 5 year warranty

| DESCRIPTION | CAPACITY | STAINLESS STEEL | WHITE | RED | DIMENSIONS (CM) | PACK |
|-----------------------------|----------|-----------------|-------------|-------------|-----------------------|------|
| DEFENDERS SQ STEP CONTAINER | 49 L | FGST24SSPL | FGST24EPLWH | FGST24EPLRD | 39.62 x 39.62 x 77.80 | 1 |
| DEFENDERS SQ STEP CONTAINER | 95 L | FGST40SSPL | FGST40EPLWH | FGST40EPLRD | 48.01 x 48.01 x 78.26 | 1 |
| DEFENDERS SQ STEP CONTAINER | 25 L | - | FGST12EPLWH | - | 30.48 x 30.48 x 58.42 | 1 |



SLIM JIM® RECYCLING STATION

An adaptable recycling solution with a front-of-house look and back-of-house functionality



SNAP-IN CONNECTOR



HINGED LID INSERTS



VENTING CHANNELS



BAG CINCHES



- Recycling station available in 7 colours
- Features 3 visual cues (the recycling symbol, a waste stream icon and text) to help with recycling segregation
- Built-in venting channels facilitate the air flow inside the bin, and make removing liners up to 80% easier to reduce the risk of worker injury
- Premium quality resin construction ensures product durability in highly demanding environments
- Easy to set up components click in place without the use of hardware
- Meet any recycling colour schemes
- Bag cinches secure liners allow for quick liner changes
- 87 L container
- Vented container supplied with a 10 year warranty

SLIM JIM® RECYCLING STATION



2 Stream



3 Stream



4 Stream



| REF | DESCRIPTION KITS | LID TYPE | DIMENSIONS (CM) | COLOUR | PACK |
|---------|---|--|-------------------------|--------|------|
| 2057605 | 2 - STREAM LANDFILL / PAPER | CLOSED LID • PAPER | 54.61 x 60.96 x 40.25 | | 1 |
| 2129601 | 2 - STREAM LANDFILL / MIXED RECYCLING | CLOSED LID • MIXED RECYCLING | 54.61 x 60.96 x 102.24 | | 1 |
| 2057733 | 2 - STREAM LANDFILL / PAPER | CLOSED LID • PAPER | 54.61 x 60.96 x 102.24 | | 1 |
| 2057607 | 3 - STREAM LANDFILL / PAPER / PLASTIC | CLOSED LID • PAPER • BOTTLES/CANS | 54.61 x 91.44 x 102.24 | | 1 |
| 2057606 | 3 - STREAM LANDFILL / PAPER / MIXED RECYCLING | CLOSED LID • PAPER • MIXED RECYCLING | 54.61 x 91.44 x 102.24 | | 1 |
| 2057608 | 4 - STREAM LANDFILL / PAPER / PLASTIC / ORGANIC | CLOSED LID (X2) • PAPER • BOTTLES/CANS | 54.61 x 121.92 x 102.24 | | 1 |
| 2057609 | 4 - STREAM LANDFILL / PAPER / PLASTIC / GLASS | CLOSED LID • PAPER • BOTTLES/CANS (X2) | 54.61 x 121.92 x 102.24 | | 1 |

STEP 1

SELECT A STARTER KIT

Build your own station by selecting the starter kit which includes a base, lid and connector.

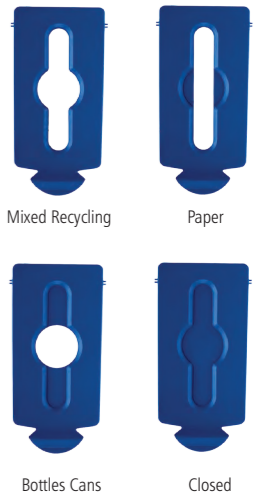


| REF | DESCRIPTION | PACK |
|---------|---------------------------------------|------|
| 2007913 | STARTER KIT (BASE, LID AND CONNECTOR) | 1 |

STEP 2

CHOOSE YOUR COLOUR OF BILLBOARDS AND OPENING TYPES

| COLOUR | CLOSED LID | BOTTLES / CANS LID | PAPER LID | MIXED RECYCLING LID | BILLBOARD | PACK |
|-----------|------------|--------------------|-----------|---------------------|-----------|------|
| BLUE | 2007888 | 2007889 | 2007890 | 2007891 | 2007909 | 1 |
| RED | 2007192 | - | 2007194 | - | 2007905 | 1 |
| YELLOW | - | 2007881 | - | 2007883 | 2007907 | 1 |
| GREEN | 2007884 | 2007885 | 2007886 | 2007887 | 2007908 | 1 |
| BLACK | 2007892 | 2007893 | 2007894 | 2007895 | 2007910 | 1 |
| DARK GREY | - | 2007897 | - | 2007899 | 2007911 | 1 |
| BROWN | 2007900 | - | 2007903 | - | 2007912 | 1 |



STEP 3

SELECT YOUR LABELS KIT

Choose from ten waste stream labels to complete the system.

| REF | DESCRIPTION |
|---------|---------------------|
| 2057734 | LABEL KIT - ENGLISH |
| 2057735 | LABEL KIT - FRENCH |
| 2057736 | LABEL KIT - GERMAN |
| 2057737 | LABEL KIT - DUTCH |
| 2057738 | LABEL KIT - ITALIAN |
| 2057739 | LABEL KIT - SPANISH |



CONFIGURE™ CONTAINERS

The Configure™ Decorative Waste Containers provide a recycling solution with sleek, smooth surfaces and contoured edges. This recycling system has a modern appearance that will fit seamlessly into any indoor commercial environment.



- Heavy-gauge steel recycling station with a damage-resistant powder coat finish features contoured edges and magnetic connections that keep receptacles perfectly aligned to one another for a professional appearance
- Rounded easy-glide feet allow the container to be moved efficiently while a colour-coded label and single stream open top reliably collect waste
- An easy-access front door with handle allows for ergonomic removal of materials from the recycler while an internal door hinge prevents wall damage
- Ships fully assembled
- Rigid plastic liner with handles has integrated cinches for knot-free bag changes and built-in venting channels that allow air to flow into the bin for easier disposal
- Label provides visual cues with colour, waste icons and text
- Provided with a 5 year warranty



STEP 1

SELECT THE RIGHT CAPACITY FOR YOUR SPECIFIC NEEDS BETWEEN 57L, 87L AND 125L

Each station includes the metal structure and an internal plastic rigid liner



STEP 2

CHOOSE THE LABELS THAT REPRESENT THE WASTE STREAM YOU WANT TO COLLECT

Each label includes the text, waste icon and colour

| | PLASTIC / PACKAGING | PAPER / CARDBOARD | GLASS | GENERAL WASTE | KITCHEN / FOOD WASTE | LANDFILL | MIXED RECYCLING |
|-------------|---------------------|-------------------|-------|---------------|----------------------|----------|-----------------|
| UK | Red | Blue | Green | Black | Brown | Black | Green |
| GERMANY | Yellow | Blue | Green | Black | Brown | / | / |
| NETHERLANDS | Orange | Blue | Green | Black | Brown | / | / |
| BELGIUM | Blue | Yellow | Green | Black | Brown | / | / |
| FRANCE | Yellow | Blue | Green | Black | Brown | / | Yellow |
| IBERIA | Yellow | Blue | Green | Black | Brown | / | / |
| ITALY | Yellow | Blue | Green | Black | Brown | / | / |



STEP 3

ADD AN OPTIONAL BILLBOARD PANEL TO PROVIDE AN ADDITIONAL VISUAL CUE TO HELP WITH RECYCLING SORTATION

Choose the label that represents the waste stream you want to collect and matches the container label you have ordered



LABELS FOR CONFIGURE™ CONTAINERS

| | UK | | FRANCE | | GERMANY | | IBERIA | | ITALY | | NETHERLANDS | | BELGIUM FR | | BELGIUM NL | | |
|--|----------|---------|--------|---------|---------|---------|--------|---------|--------|---------|-------------|---------|------------|---------|------------|---------|---|
| | CAPACITY | REF | COLOUR | REF | COLOUR | REF | COLOUR | REF | COLOUR | REF | COLOUR | REF | COLOUR | REF | COLOUR | | |
| | 57 L | 2154725 | ● | 2154781 | ● | 2154770 | ● | 2154979 | ● | 2154994 | ● | 2155012 | ● | 2155027 | ● | 2155144 | ● |
| | 87 L | 2154752 | ● | 2154947 | ● | 2154775 | ● | 2154984 | ● | 2155002 | ● | 2155017 | ● | 2155032 | ● | 2155149 | ● |
| | 125 L | 2154759 | ● | 2154973 | ● | 2154780 | ● | 2154989 | ● | 2155007 | ● | 2155022 | ● | 2155037 | ● | 2155194 | ● |
| | 57 L | 2154726 | ● | 2154782 | ● | 2154767 | ● | 2154980 | ● | 2154968 | ● | 2155013 | ● | 2155028 | ● | 2155145 | ● |
| | 87 L | 2154753 | ● | 2154948 | ● | 2154772 | ● | 2154985 | ● | 2155003 | ● | 2155018 | ● | 2155033 | ● | 2155150 | ● |
| | 125 L | 2154760 | ● | 2154974 | ● | 2154777 | ● | 2154990 | ● | 2155008 | ● | 2155023 | ● | 2155038 | ● | 2155195 | ● |
| | 57 L | 2154727 | ● | 2154783 | ● | 2154768 | ● | 2154981 | ● | 2154969 | ● | 2155014 | ● | 2155029 | ● | 2155146 | ● |
| | 87 L | 2154754 | ● | 2154949 | ● | 2154773 | ● | 2154986 | ● | 2155004 | ● | 2155019 | ● | 2155034 | ● | 2155191 | ● |
| | 125 L | 2154761 | ● | 2154975 | ● | 2154778 | ● | 2154991 | ● | 2155009 | ● | 2155024 | ● | 2155039 | ● | 2155196 | ● |
| | 57 L | 2154728 | ● | 2154784 | ● | 2154769 | ● | 2154982 | ● | 2154970 | ● | 2155015 | ● | 2155030 | ● | 2155147 | ● |
| | 87 L | 2154755 | ● | 2154950 | ● | 2154774 | ● | 2154987 | ● | 2155005 | ● | 2155020 | ● | 2155035 | ● | 2155192 | ● |
| | 125 L | 2154762 | ● | 2154976 | ● | 2154779 | ● | 2154992 | ● | 2155010 | ● | 2155025 | ● | 2155040 | ● | 2155197 | ● |
| | 57 L | 2154729 | ● | 2154945 | ● | 2154770 | ● | 2154983 | ● | 2155001 | ● | 2155016 | ● | 2155031 | ● | 2155148 | ● |
| | 87 L | 2154756 | ● | 2154971 | ● | 2154775 | ● | 2154988 | ● | 2155006 | ● | 2155021 | ● | 2155036 | ● | 2155193 | ● |
| | 125 L | 2154763 | ● | 2154977 | ● | 2154780 | ● | 2154993 | ● | 2155011 | ● | 2155026 | ● | 2155143 | ● | 2155198 | ● |
| | 57 L | 2154730 | ● | | | | | | | | | | | | | | |
| | 87 L | 2154757 | ● | | | | | | | | | | | | | | |
| | 125 L | 2154764 | ● | | | | | | | | | | | | | | |
| | 57 L | 2154751 | ● | 2154946 | ● | | | | | | | | | | | | |
| | 87 L | 2154758 | ● | 2154972 | ● | | | | | | | | | | | | |
| | 125 L | 2154765 | ● | 2154978 | ● | | | | | | | | | | | | |

LABELS FOR CONFIGURE™ CONTAINER BILLBOARDS

| CAPACITY | PLASTIC / PACKAGING | PAPER / CARDBOARD | GLASS | GENERAL WASTE | KITCHEN / FOOD WASTE | LANDFILL | MIXED RECYCLING |
|----------|---------------------|-------------------|---------|---------------|----------------------|----------|-----------------|
| 57 L | 2155199 | 2155298 | 2155304 | 2155310 | 2155315 | 2155328 | 2155332 |
| 87 L | 2155189 | 2155300 | 2155306 | 2155312 | 2155324 | 2155329 | 2155334 |
| 125 L | 2155293 | 2155302 | 2155308 | 2155314 | 2155326 | 2155330 | 2155336 |
| 57 L | 2155200 | 2155297 | 2155303 | 2155309 | 2155323 | | 2155331 |
| 87 L | 2155190 | 2155299 | 2155305 | 2155311 | 2155325 | | 2155333 |
| 125 L | 2155294 | 2155301 | 2155307 | 2155313 | 2155327 | | 2155335 |
| 57 L | 2155187 | | | | | | |
| 87 L | 2155291 | | | | | | |
| 125 L | 2155295 | | | | | | |
| 57 L | 2155188 | | | | | | |
| 87 L | 2155292 | | | | | | |
| 125 L | 2155296 | | | | | | |

ROUND TOPS



The classic design of this indoor receptacle blends perfectly into any modern or upscale environment.



FGR1536EGLBK FGR1536EOTGLBK FGR32EGLBK FGR32SSSGL

- Heavy-gauge, fire-safe steel for years of reliable service
- Self-closing push door controls odours
- UL listed, FM approved
- Bottom rim is designed to protect floors
- Hand grips for easy lift-off emptying
- Provided with a 5 year warranty

| REF | DESCRIPTION | DIMENSIONS (CM) | CAPACITY | COLOUR | PACK |
|----------------|---------------------|-----------------------|----------|--------|------|
| FGR1536EGLBK | ROUND TOPS PUSH | 38.10 x 38.10 x 91.03 | 56 L | ● | 1 |
| FGR1536EOTGLBK | ROUND TOPS OPEN TOP | 38.10 x 38.10 x 91.03 | 56 L | ● | 1 |
| FGR32EGLBK | ROUND TOPS OPEN TOP | 38.10 x 38.10 x 91.03 | 56 L | ● | 1 |
| FGR32SSSGL | ROUND TOPS OPEN TOP | 38.10 x 38.10 x 91.03 | 56 L | ● | 1 |

HALF ROUNDS



The sleek and functional design of this indoor receptacle blends nicely with upscale environments.



FGS08SSSPL FGS01220PLBK FGS012SSSPL FGS12EPLSM

- Heavy-gauge, fire-safe steel for years of reliable service
- Half round design fits flush against walls
- Bottom rim is designed to protect floors
- Leak-proof rigid plastic liner included to contain liquids and keep the surrounding area cleaner
- Shipped fully assembled
- Open top design for easy waste disposal
- Provided with a 5 year warranty

| REF | DESCRIPTION | DIMENSIONS (CM) | CAPACITY | COLOUR | PACK |
|--------------|---------------------|-----------------------|----------|--------|------|
| FGS08SSSPL | HALF ROUND | 44.70 x 44.70 x 82.55 | 34 L | ● | 4 |
| FGS0820PLBK | HALF ROUND | 44.70 x 44.70 x 82.55 | 34 L | ● | 1 |
| FGSH12EPLTBK | HALF ROUND OPEN TOP | 44.70 x 44.70 x 82.55 | 45 L | ● | 1 |
| FGSH12SSSPL | HALF ROUND OPEN TOP | 44.70 x 44.70 x 82.55 | 45 L | ● | 1 |
| FGS01220PLBK | HALF ROUND OPEN TOP | 44.70 x 44.70 x 82.55 | 45 L | ● | 1 |
| FGS012SSSPL | HALF ROUND OPEN TOP | 44.70 x 44.70 x 82.55 | 45 L | ● | 1 |
| FGSH12EPLSM | HALF ROUND OPEN TOP | 44.70 x 44.70 x 82.55 | 45 L | ● | 1 |

SILHOUETTE



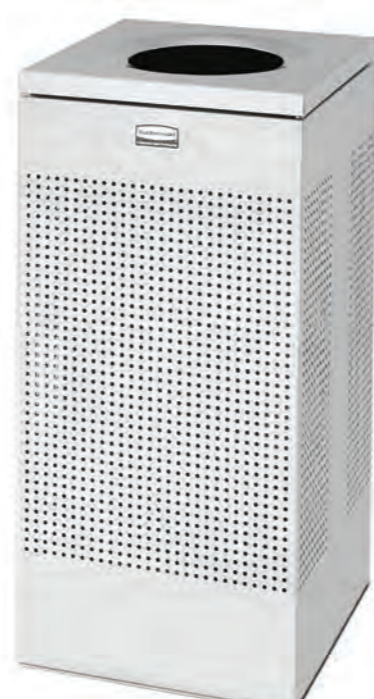
Sleek shape and contemporary pattern beautifully blend with modern facilities and environments.



FGSR18SSPL



FGSR14EPLTBK



FGSC14SSPL

- Leak-proof rigid plastic liner included to help contain liquids and keep the surrounding area cleaner
- Retainer bands discreetly hold liner bags in place and out of sight
- Heavy-gauge, fire-safe steel for lasting durability in high traffic areas
- Lid is fastened to receptacle for easy waste removal
- Provided with a 5 year warranty

| REF | DESCRIPTION | DIMENSIONS (CM) | CAPACITY | COLOUR | PACK |
|--------------|-----------------------------|-----------------------|----------|--------|------|
| FGSR14SSPL | SILHOUETTE SMALL RECTANGLE | 49.50 x 49.50 x 77.09 | 49 L | ● | 1 |
| FGSR14EPLTBK | SILHOUETTE SMALL RECTANGLE | 49.50 x 49.50 x 77.09 | 49 L | ● | 1 |
| FGSC14EPLTBK | SILHOUETTE SQUARE OPEN TOP | 37.50 x 37.50 x 77.09 | 60 L | ● | 1 |
| FGSC14SSPL | SILHOUETTES OPEN TOP SQUARE | 37.50 x 37.50 x 77.09 | 60 L | ● | 1 |
| FGSR18SSPL | SILHOUETTE LARGE RECTANGLE | 61.00 x 61.00 x 77.09 | 85 L | ● | 4 |
| FGSR18EPLTBK | SILHOUETTE LARGE RECTANGLE | 61.00 x 61.00 x 77.09 | 85 L | ● | 1 |

ATRIUM™



The classic design of this indoor receptacle compliments the decor of indoor facilities.



FGAOT35SA

- Designed to conceal and securely hold liner bags out of sight
- Fire-safe construction
- Corrosion-resistant material for lasting durability
- High-quality polish eliminates blemishes
- Provided with a 5 year warranty

| REF | DESCRIPTION | DIMENSIONS (CM) | CAPACITY | COLOUR | PACK |
|-----------|-------------------|-----------------------|----------|--------|------|
| FGAOT35SA | ATRIUM™ ALUMINIUM | 45.72 x 45.72 x 81.28 | 132 L | ● | 1 |



BRUTE® Containers

Highly Durable Waste Containers Created With The Toughest Environments In Mind. Guaranteed to never fade, warp, crack, or crush.

BRUTE® VENTED CONTAINERS



FG265500GRAY

- 1 BAG CINCHES:**
Secure liners allowing for knot-free liner changes.
- 2 ROUNDED HANDLES:**
Make lifting and moving easier, and are reinforced to resist tearing or damage from even the heaviest loads
- 3 VENTING CHANNELS:**
Make removing liners up to 50% easier, improving productivity and reducing the risk of injury
- 4 REINFORCED BASE:**
Specifically engineered to be dragged over rough surfaces, extending life and durability in even the toughest environments



37,9 L

75,7 L

121,1 L



166,5 L

208,2 L

- Rim features integrated rib to increase container strength
- Base and handles improve grip facilitates emptying of the bin
- Bag cinches secure the liner allow for quick liner changes
- Manufactured with ultra violet inhibitors ideal for use in outdoor environments
- All standard BRUTE® Containers come with a 10 year warranty

| REF | COLOUR CODE | DESCRIPTION | DIMENSIONS (CM) | CAPACITY | COLOUR | PACK |
|----------|---------------------------|--|-----------------|----------|--------|------|
| FG261000 | GRAY, WHT | BRUTE® CONTAINER | Ø 39.7 x 43.5 | 37.9 L | | 6 |
| FG262000 | GRAY, WHT, YEL, BLUE | BRUTE® CONTAINER | Ø 49.5 x 58.1 | 75.7 L | | 6 |
| FG262073 | BLUE | BRUTE® CONTAINER | Ø 49.5 x 58.1 | 75.7 L | | 6 |
| FG263200 | GRAY, WHT, YEL, BLUE, RED | BRUTE® CONTAINER | Ø 55.9 X 69.2 | 121.1 L | | 6 |
| FG263273 | BLUE | BRUTE® CONTAINER | Ø 55.9 X 69.2 | 121.1 L | | 6 |
| 1779740 | | BRUTE® CONTAINER WITH VENTING CHANNELS | Ø 61.0 X 80.0 | 166.5 L | | 6 |
| 1980826 | GRAY, YEL, BLA, RED | BRUTE® CONTAINER WITH VENTING CHANNELS | Ø 61.0 X 80.0 | 166.5 L | | 6 |
| FG265500 | GRAY, BLA | BRUTE® CONTAINER | Ø 67.3 X 83.8 | 208.2 L | | 6 |

BRUTE® ACCESSORIES

BRUTE® Lids

Variety Of Lids And Accessories. Available To Adapt Container Into Any Environment.



- Several lids from self-draining lids, dome top lids and funnel top lids

| REF | COLOUR CODE | DESCRIPTION | DIMENSIONS (CM) | COLOUR | PACK |
|----------|---------------------------------|-------------------------------------|-----------------|--------|------|
| 1779731 | BLUE | BRUTE® LID FITS 75.7 L CONTAINERS | Ø 50.5 x 4.6 | | 6 |
| FG260900 | GRAY, WHT | SNAP-ON LID FITS 37.9 L CONTAINERS | Ø 40.6 x 2.5 | | 6 |
| FG261960 | GRAY, WHT, YEL, BLA, DGRN | BRUTE® LID FITS 75.7 L CONTAINERS | Ø 50.5 x 4.6 | | 6 |
| FG263100 | GRAY, RED, YEL, WHT, DGRN, BLUE | SNAP-ON LID FITS 121.1 L CONTAINERS | Ø 56.5 x 3.5 | | 6 |
| FG264560 | BLA, GRAY, WHT | LID FOR 166.5L CONTAINERS | Ø 62.2 x 3.8 | | 4 |
| FG265400 | GRAY | SNAP-ON LID FITS 208.2 L CONTAINERS | Ø 67.9 x 5.1 | | 3 |
| FG354300 | GRAY | FUNNEL TOP FITS 121.1 L CONTAINERS | Ø 56.8 x 12.7 | | 4 |
| FG263788 | RED | DOME TOP FITS 121.1 L CONTAINERS | Ø 57.6 x 31.1 | | 1 |
| FG264788 | RED | DOME TOP FITS 166.5L CONTAINERS | Ø 63.0 x 32.1 | | 1 |

BRUTE® Dollies



- Variety of dollies from single dolly, tandem dolly and quiet dolly

| REF | DESCRIPTION | DIMENSIONS (CM) | COLOUR | PACK |
|-------------|------------------------------|------------------------|--------|------|
| FG264000BLA | BRUTE® STRUCTURAL FOAM DOLLY | Ø 46.4 x 16.8 cm | | 2 |
| FG264600BLA | BRUTE® TANDEM DOLLY | 114.3 x 51.4 x 20.3 cm | | 1 |
| FG265000BLA | BRUTE® UNIVERSAL DRUM DOLLY | Ø 61.9 x 18.1 cm | | 2 |
| FG353000BLA | BRUTE® SQUARE DOLLY | 43.8 x 43.8 x 15.9 cm | | 2 |
| FG264043BLA | BRUTE® QUIET DOLLY | Ø 46.4 x 16.8 cm | | 1 |

BRUTE® Cleaning Accessories



- Provides storage for everything from wet floor signs to spray bottles and all the other supplies needed for on-the-go cleaning
- Onboard storage for spray bottles, cleaning cloths, extra can liners and other cleaning supplies

| REF | DESCRIPTION | DIMENSIONS (CM) | COLOUR | PACK |
|-------------|---|-----------------------|--------|------|
| FG9W8700YEL | BRUTE® ACCESSORIES RIM CADDY FITS FOR 166.5 L | 82.5 x 67.3 x 17.1 cm | | 1 |
| 1867533 | EXEC BRUTE® CADDY BAG BLA | 38.7 x 28.6 x 4.4 cm | | 6 |

SLIM JIM® VENTED CONTAINERS

Enable easy waste management and reduce worker strain in any facility



- 1 ROBUST RIM HANDLES:**
Resists tearing and damage during lifting and moving
- 2 VENTING CHANNELS:**
Make removing liners 80% easier, improving productivity and reducing the risk of worker injury
- 3 BAG CINCHES:**
Secure liners around the rim of the container and allow for quick, knot-free liner changes
- 4 COMMERCIAL-GRADE CONSTRUCTION:**
High-quality resin material ensures product durability in highly demanding environments

- Slim Jim® Vented Containers are built to last. The venting channels, high quality resin, bag cinches and robust rim structure make a facility's waste management efficient, ergonomic and effortless
- All Slim Jim® Vented Containers come with a 10 year warranty

| REF | COLOUR CODE | DESCRIPTION | DIMENSIONS (CM) | CAPACITY | COLOUR | PACK |
|----------|-----------------|---------------------------------|--------------------|----------|--------|------|
| 1971258 | | SLIM JIM® WITH VENTING CHANNELS | 55.8 x 27.9 x 63.5 | 60 L | | 4 |
| 1955959 | | SLIM JIM® WITH VENTING CHANNELS | 55.8 x 27.9 x 63.5 | 60 L | | 4 |
| 1971259 | | SLIM JIM® WITH VENTING CHANNELS | 55.8 x 27.9 x 63.5 | 60 L | | 4 |
| 1956181 | | SLIM JIM® WITH VENTING CHANNELS | 55.8 x 27.9 x 63.5 | 60 L | | 4 |
| 1971257 | | SLIM JIM® WITH VENTING CHANNELS | 55.8 x 27.9 x 63.5 | 60 L | | 4 |
| 1955960 | | SLIM JIM® WITH VENTING CHANNELS | 55.8 x 27.9 x 63.5 | 60 L | | 4 |
| FG354060 | BEIG, BLA, GRAY | SLIM JIM® WITH VENTING CHANNELS | 55.8 x 27.9 x 76.2 | 87 L | | 4 |
| FG354007 | BLUE, GRN | SLIM JIM® WITH VENTING CHANNELS | 55.8 x 27.9 x 76.2 | 87 L | | 4 |
| 1956187 | | SLIM JIM® WITH VENTING CHANNELS | 55.8 x 27.9 x 76.2 | 87 L | | 4 |
| 1956188 | | SLIM JIM® WITH VENTING CHANNELS | 55.8 x 27.9 x 76.2 | 87 L | | 4 |
| 1956189 | | SLIM JIM® WITH VENTING CHANNELS | 55.8 x 27.9 x 76.2 | 87 L | | 4 |



SLIM JIM® ACCESSORIES

Slim Jim® Dollies

The Slim Jim® Vented Stainless Steel Double Dolly is designed to support and transport Slim Jim® containers smoothly and efficiently through any commercial facility.



- Fits both 60l and 87l containers
- Constructed of durable stainless steel or resin, these dollies are easily cleaned and maintained

| REF | DESCRIPTION | DIMENSIONS (CM) | COLOUR | PACK |
|---------|--------------------------------------|--------------------|--------|------|
| R050528 | POWDER COATED STEEL DOLLY | 51.6 x 23.6 x 24.1 | ● | 2 |
| 1980602 | SLIM JIM DOLLY TRAINABLE RESIN BLACK | 60.6 x 37.4 x 21.2 | ● | 2 |
| 1956191 | SLIM JIM VENTED DOUBLE DOLLY SS | 50.8 x 52.3 x 22.8 | ● | 1 |
| 1968468 | SLIM JIM DOLLY SINGLE SS | 50.8 x 23.6 x 22.8 | ● | 2 |

Slim Jim® Lids

Lids encourage waste separation and recycling with interchangeable, colour-coded tops.



| REF | COLOUR CODE | DESCRIPTION | DIMENSIONS (CM) | COLOUR | PACK |
|----------|-----------------|-------------------------------|--------------------|--------|------|
| FG269288 | GRN | BOTTLE LID | 51.8 x 29.0 x 7 | ● | 4 |
| 1788372 | | SLIM JIM® LID MIXED RECYCLING | 51.7 x 29.2 x 7 | ♻️ | 4 |
| 1788373 | | SLIM JIM® LID MIXED RECYCLING | 51.7 x 29.2 x 7 | ♻️ | 4 |
| FG270388 | BLUE | SLIM JIM® PAPER SLOT TOP | 51.8 x 29.0 x 7 | ● | 4 |
| FG267360 | BLA, BLUE, GRAY | SLIM JIM® SWING LID | 52.3 x 29.4 x 12.7 | ●●● | 4 |
| FG267400 | BLA | SLIM JIM® HINGED LID | 55.6 x 34.1 x 3.1 | ● | 4 |

SLIM JIM® CLEANING ACCESSORIES

The Slim Jim® Rim Caddy Kit is a purpose-built system to store and transport common cleaning tools.



- The Slim Jim® Rim Caddy Kit includes an integrated dustpan holder, dedicated hooks to hold a safety sign, and space for storing up to 3 spray bottles
- The slim profile of a Slim Jim® container paired with the Slim Jim® Rim Caddy allows for easy maneuvering in the tightest spaces
- Commercial-grade construction with high-quality resin material
- Ergonomic handle
- It includes a Slim Jim® Rim Caddy, 87l container, Resin Trainable Dolly, Stick Clip, Wide Hook, and Peg Hook to create a mobile cleaning and waste collection system designed for the tightest spaces

| REF | DESCRIPTION | DIMENSIONS (CM) | COLOUR | PACK |
|---------|-----------------------------|--------------------|--------|------|
| 2032953 | SLIM JIM® RIM CADDY KIT BLK | 87.1 x 35.9 x 90.8 | ● | 1 |



WASTEBASKETS & ACCESSORIES



Utility Wastebaskets

Space-efficient, economical, and an effective way to recycle.



- All-plastic construction won't chip, rust or dent. Rolled rims add strength, and are easy to clean
- Fits under standard-height desk
- Provided with a 5 year warranty

| REF | COLOUR CODE | DESCRIPTION | DIMENSIONS (CM) | CAPACITY | COLOUR | PACK |
|--------------|-------------|----------------------------|--------------------|----------|--------|------|
| FG295073 | BLA, BLUE | WASTEBASKET SIDE BIN | 26.5 x 12 x 29.5 | 4.5 L | ●● | 12 |
| FG295573BLUE | | WASTEBASKET DS RECYCLE SM | 28.9 x 21 x 30.8 | 12.9 L | ♻️ | 12 |
| FG295673BLUE | | WASTEBASKET DS RECYCLE MED | 36.5 x 26 x 38 | 26.6 L | ♻️ | 12 |
| FG295773BLUE | | WASTEBASKET DS RECYCLE LG | 38.7 x 27.9 x 50.5 | 39 L | ♻️ | 12 |
| FG295500GRAY | | WASTEBASKET SMALL RCT | 28.9 x 21 x 30.8 | 12.9 L | ● | 12 |
| FG295600 | BLA, GRAY | WASTEBASKET MED RCT | 36.5 x 26 x 38 | 26.6 L | ●● | 12 |
| FG295700 | BLA, GRAY | WASTEBASKET LG RCT | 38.7 x 27.9 x 50.5 | 39 L | ●● | 12 |
| FG306600BLA | | WASTEBASKET SWINGTOP | 38.1 x 27.6 x 15.2 | | ● | 6 |
| FG306700BLA | | WASTEBASKET SWINGTOP | 40.6 x 29.5 x 17.8 | | ● | 6 |

Concept Collection

A fresh, functional design.



- No-snap curled rim protects clothing
- Solid steel base keeps waste from touching floors
- Hands-free disposal
- Provided with a 5 year warranty

| REF | DESCRIPTION | DIMENSIONS (CM) | CAPACITY | COLOUR | PACK |
|------------|-------------------------------|-----------------|----------|--------|------|
| FGWMB20SLV | WASTEBASKET RND MESH OPEN TOP | Ø 29.1 x 35.6 | 19 L | ● | 6 |

Fire Resistant Wastebasket

The Fire-Resistant Wastebasket features a contemporary shape.



- Great for use in areas requiring increased levels of fire protection, such as hospitals, schools, and hotels
- Textured finish for enhanced aesthetics
- Provided with a 5 year warranty

| REF | DESCRIPTION | DIMENSIONS (CM) | CAPACITY | COLOUR | PACK |
|--------------|----------------------------|-----------------|----------|--------|------|
| FG254100BEIG | FIRE RESISTANT WASTEBASKET | 9.1 x 35.6 | 13,2 L | ● | 6 |

UNTOUCHABLE®



Untouchable® Containers

Stationery containers provide convenient central collection sites for multiple work stations or areas.



- Venting channels make removing liners up to 50% easier, improving productivity
- Durable and crack-resistant, even under tough conditions
- Bag cinch secures liner around the rim of the container and allows for quick, knot-free liner changes
- Provided with a 5 year warranty

| REF | DESCRIPTION | DIMENSIONS (CM) | CAPACITY | COLOUR | PACK |
|--------------|--------------------------------|-----------------------|----------|--------|------|
| FG356988GRAY | UNTOUCHABLE SQUARE CONTAINER | 41.91 x 39.37 x 78.49 | 87 L | ● | 1 |
| FG356988BLA | UNTOUCHABLE SQUARE CONTAINER | 41.91 x 39.37 x 78.49 | 87 L | ● | 1 |
| FG356973BLUE | UNTOUCHABLE SQUARE CONTAINER | 41.91 x 39.37 x 78.49 | 87 L | ♻️ | 1 |
| FG395800GRAY | UNTOUCHABLE SQUARE CONTAINER | 49.53 x 49.53 x 70.18 | 132 L | ● | 1 |
| FG395873BLUE | UNTOUCHABLE SQUARE CONTAINER | 49.53 x 49.53 x 70.18 | 132 L | ♻️ | 1 |
| FG354600GRAY | UNTOUCHABLE ROUND CONTAINER | 40 x 40 x 76,53 | 83 L | ● | 1 |
| FG356300BEIG | UNTOUCHABLE SQUARE RIGID LINER | 36.8 x 36.8 x 71.1 cm | 71,9 L | ● | 4 |

Untouchable® Lids

Various lids to help with waste sorting and recycling.



| REF | DESCRIPTION | DIMENSIONS (CM) | COLOUR | PACK |
|--------------|--|-----------------------|--------|------|
| FG268988BLA | UNTOUCHABLE SQUARE SWING TOP FOR 87 L | 40.64 X 40.64 X 10.16 | ● | 1 |
| FG354800GRAY | UNTOUCHABLE ROUND FUNNEL TOP FOR 83 L | Ø 41.3 x 10.1 | ● | 1 |
| FG266400GRAY | UNTOUCHABLE SQUARE SWING TOP FOR 132 L | 51.12 X 51.12 X 15.88 | ● | 1 |

LANDMARK™

The Landmark™ Waste Container offers contemporary styling with a side-opening door for ergonomic waste emptying.



FG9P9100BLA

FG396300BEIG

FG396400DGRN

- Side-open door reduces lifting and back strain
- Spring-loaded door conceals contents, traps odours, and prevents pest intrusion
- Includes bolt-down capability
- Features convenient ashtray insert on top of container for some models
- Features a tray top for multipurpose usage for some models

| REF | DESCRIPTION | DIMENSIONS (CM) | CAPACITY | COLOUR | PACK |
|--------------|--------------------------------------|------------------------|----------|--------|------|
| FG9P9000BLA | LANDMARK™ JR CONTR | 54.5 x 51.6 x 104.3 cm | 132 L | ● | 1 |
| FG9P9100BLA | LANDMARK™ JR CONTR WITH ASH TRAY TOP | 54.5 x 51.6 x 104.3 cm | 132 L | ● | 1 |
| FG396300BEIG | LANDMARK™ CONTAINER WITH TRAY TOP | 62.87 x 64,14 x 109.22 | 189 L | ● | 1 |
| FG396400BEIG | LANDMARK™ CONTAINER BEIGE | 62.87 x 65,14 x 107,01 | 189 L | ● | 1 |
| FG396400DGRN | LANDMARK™ CONTAINER GREEN | 62.87 x 65,14 x 107,01 | 189 L | ● | 1 |
| FG396400BLA | LANDMARK™ CONTAINER BLACK | 62.87 x 65,14 x 107,01 | 189 L | ● | 1 |

MARSHAL®

The Marshal® Classic Container is a durable receptacle suitable for a variety of indoor or sheltered outdoor areas.



FG816088BLA

FG817088BEIG

- Domed tops for easy removal
- Retainer bands secure and conceal liners
- Sturdy, large capacity refuse receptacles

| REF | DESCRIPTION | DIMENSIONS (CM) | CAPACITY | COLOUR | PACK |
|--------------|------------------------------|-----------------|----------|--------|------|
| FG816088BEIG | MARSHAL® CONTAINER W/O LINER | Ø 39 x 92 | 57 L | ● | 1 |
| FG816088BLA | MARSHAL® CONTAINER W/O LINER | Ø 39 x 92 | 57 L | ● | 1 |
| FG817088BEIG | MARSHAL® CONTAINER W/O LINER | Ø 45 x 103 | 95 L | ● | 1 |
| FG817088BLA | MARSHAL® CONTAINER W/O LINER | Ø 45 x 103 | 95 L | ● | 1 |

RANGER®

The Ranger® Classic Waste Containers feature Rubbermaid's famous durability, modern styling, and easy-to-service design.



FG843088BLA



FG917188BEIG



FG917388BLA



FG917700BLA

- Ideal for high-capacity waste management
- Permanently attached hinged lid offers easy emptying

| REF | DESCRIPTION | DIMENSIONS (CM) | CAPACITY | COLOUR | PACK |
|--------------|-----------------------------|---------------------|----------|--------|------|
| FG843088BEIG | RANGER® 2 DOOR CONTAINER | 54.6 x 54.6 x 104.1 | 132 L | ● | 1 |
| FG843088BLA | RANGER® 2 DOOR CONTAINER | 54.6 x 54.6 x 104.1 | 132 L | ● | 1 |
| FG917188BEIG | RANGER® 2 DOOR CONTAINER | 63 x 63 x 105.4 | 170 L | ● | 1 |
| FG917188BLA | RANGER® 2 DOOR CONTAINER | 63 x 63 x 105.4 | 170 L | ● | 1 |
| FG917388BEIG | RANGER® 4 OPENING CONTAINER | 63 x 63 x 105.4 | 170 L | ● | 1 |
| FG917388BLA | RANGER® 4 OPENING CONTAINER | 63 x 63 x 105.4 | 170 L | ● | 1 |
| FG917700BLA | RANGER® WEIGHT BASE | 62.2 x 62.2 x 15.2 | - | ● | 1 |



INFINITY™ SMOKING

MANAGEMENT SOLUTIONS



The Stainless Steel Infinity™ Ultra-High Capacity Smokers Station offers sophisticated styling and all-metal construction for attractive and efficient smoking litter management.



FG9W3400BLA



FG9W3100SSBLA



FG9W3200SSBLA



FG9W3300BLA

- Stainless steel snuff plate minimises smoldering
- 360-degree disposal area
- Guidance tabs on collars and bases enable simple removal and reattachment of receptacles during cleaning
- Weighted bases and bolt-down options provide added outdoor stability

| REF | DESCRIPTION | BUTT CAPACITY | DIMENSIONS (CM) | COLOUR | PACK |
|---------------|-----------------------------------|---------------|-----------------|--------|------|
| FG9W3400BLA | SM INFINITY ULTRA HIGH RECEPTACLE | 8000 | Ø 40.0 x 101.0 | ● | 1 |
| FG9W3100SSBLA | SM INFINITY BASEMOUNT RECEPTACLE | 1500 | Ø 40.0 x 101.0 | ● | 1 |
| FG9W3200SSBLA | SM INFINITY WALL MOUNT RECEPTACLE | 700 | Ø 30.0 x 46.0 | ● | 1 |
| FG9W3300BLA | SM INFINITY TRADL RECEPTACLE | 5000 | Ø 33.0 x 100.0 | ● | 1 |

METROPOLITAN SMOKERS' STATION



Metropolitan is a stylish, all-metal, high capacity smoker's station.



FGR93400BK



FGR93400SM

- Contemporary looking
- Features weather-resistant Uni-Koat™ powder coating finish
- Easy to empty with removable, galvanised liner
- Bolt down option prevents theft, pilferage and tip-overs

| REF | DESCRIPTION | BUTT CAPACITY | DIMENSIONS (CM) | COLOUR | PACK |
|------------|-------------------------------|---------------|-------------------|--------|------|
| FGR93400BK | METROPOLITAN SMOKERS' STATION | 1800 | Ø 42.7 x 108.7 cm | ● | 1 |
| FGR93400SM | METROPOLITAN SMOKERS' STATION | 1800 | Ø 42.7 x 108.7 cm | ● | 1 |

SMOKERS' POLE



The Smokers' Pole reduces obstruction in high-traffic areas.



- Space-saving design for convenient cigarette disposal
- Weather resistant and UV stabilised
- Easy to empty
- Made of durable aluminum

| REF | DESCRIPTION | BUTT CAPACITY | DIMENSIONS (CM) | COLOUR | PACK |
|--------|-------------------------------|---------------|----------------------------|--------|------|
| FGR1BK | SMOKERS' POLE BLACK | 1000 | Ø 10.2 (32.4 base) x 107.9 | ● | 1 |
| FGR1SM | SMOKERS' POLE SILVER METALLIC | 1000 | Ø 10.2 (32.4 base) x 107.9 | ● | 1 |

GROUNDSKEEPER® TUSCAN



Classic, all-weather solution to an unsightly environmental problem.



- Design blends with many styles
- Stainless steel snuff plate
- Anchor holes for added security
- Hygienic, easy-to-service steel canister
- Restricted opening shields waste from view, weather, and flow of oxygen
- Galvanised steel inner canister holds large quantities of cigarette waste

| REF | DESCRIPTION | BUTT CAPACITY | DIMENSIONS (CM) | COLOUR | PACK |
|--------------|---|---------------|---------------------|--------|------|
| FG9W29000000 | GROUNDSKEEPER® TUSCAN RECEPTACLE SECURITY KIT | - | - | - | 1 |
| FG257088BLA | GROUNDSKEEPER® SMOKING MANAGEMENT RECEPTACLE | 500 | 31.1 x 31.1 x 100.1 | ● | 1 |
| FG9W3000BLA | GROUNDSKEEPER® TUSCAN RECEPTACLE | 600 | 35.7 x 35.7 x 102.9 | ● | 1 |

ALADDIN SMOKER'S STATION



Weather-resistant, fire-safe steel construction will not burn.



FGR1639EHGR

- Factory Mutual approved fire-safe/ self-extinguishing
- Oxygen-restricting design quickly extinguishes cigarettes
- Nylon base pads prevent damage to surface and base
- Stainless steel latches and nickel-plated brass chain

| REF | DESCRIPTION | CAPACITY | DIMENSIONS (CM) | COLOUR | PACK |
|-------------|--------------------------|----------|-----------------|--------|------|
| FGR1639EHGR | ALADDIN SMOKERS' STATION | 16.1 L | Ø 40.6 x 98.4 | ● | 1 |

SMOKER' STATION



Simply snuff out cigarettes on the extinguishing screen and drop into the receptacle.



FGR1012EBK

- Heavy-gauge, hot-dipped galvanised steel construction for fire-safety
- Unobtrusive wall-mounted design

| REF | DESCRIPTION | DIMENSIONS (CM) | COLOUR | PACK |
|------------|--|-------------------|--------|------|
| FGR1012EBK | SMOKERS' STATION® WALL-MOUNT URN W/ KEYED CAM LOCK BLACK | 25.4 x 7.6 x 31.8 | ● | 1 |



CLEANING


Keeping a facility that is extremely busy or sensitive to germs clean can be a real challenge. Whether you are cleaning an airport, a hospital or a school, your users' hygiene expectations need to be met.

Discover RCP's wide range of high quality cleaning solutions that are durable, cost-efficient and fit for any environment.



UNDERSTANDING MICROFIBRE

At its most basic, the term "microfibre" refers to a micro, or small, fiber made up of synthetic materials such as polyester, nylon or a combination of the two fibers. The individual microfibrils are knit together to form cleaning tools that are able to trap microscopic particles and liquids within the intricate network of small fibers far more efficiently than larger fibers.

 [View our white paper, "Defining MICROFIBRE: The HYGEN™ Differ](#)



Unable to be seen by the eye, **one fiber measures less than one denier**, the measurement for the linear weight or mass density of fibers.

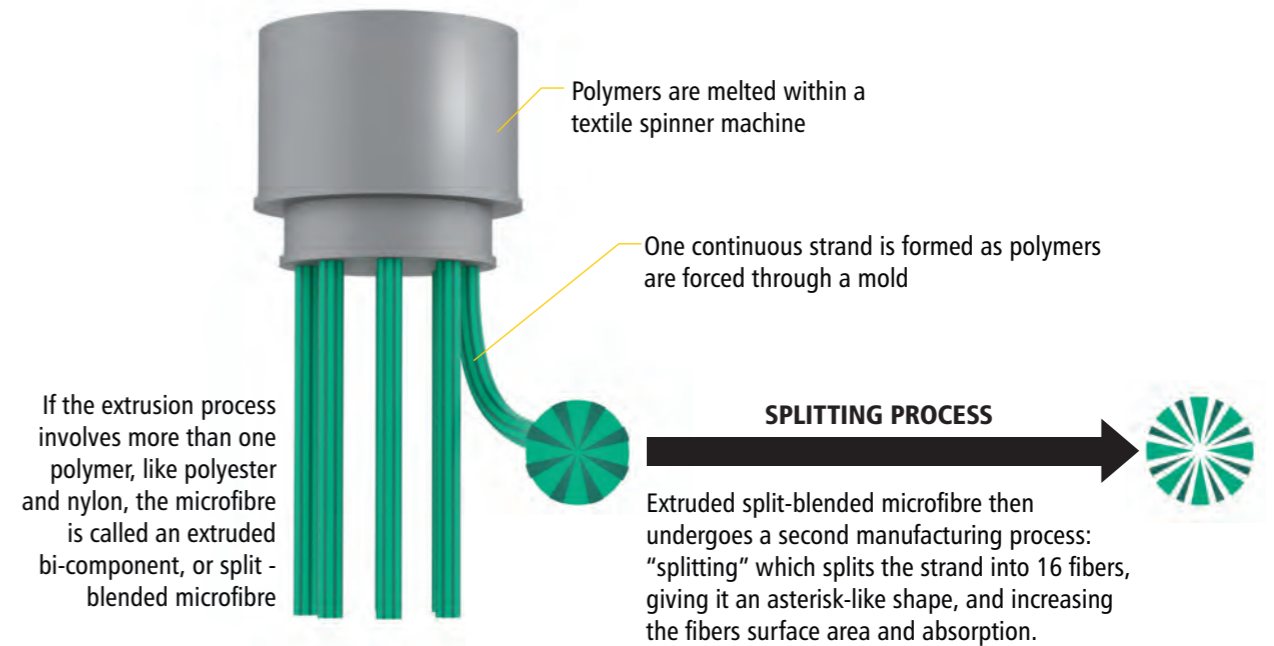
HOW SMALL IS ONE STRAND OF MICROFIBRE?

Images below are magnified to demonstrate size comparisons.

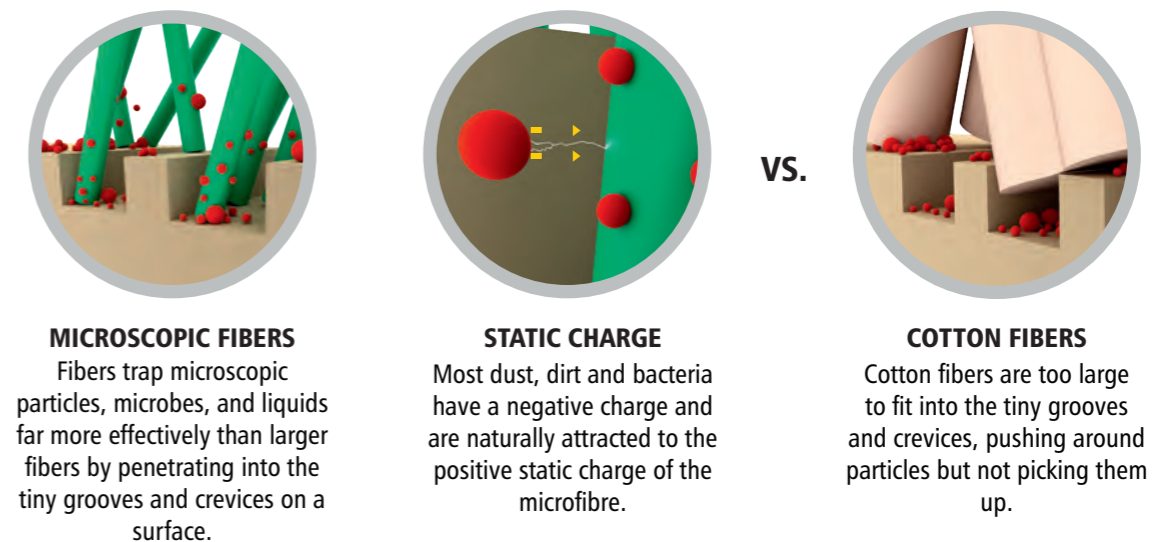


HOW IS MICROFIBRE MADE?

All microfibre begins with extrusion, which is the process of the shaping of a substance by forcing it through a mold.



HOW DOES MICROFIBRE WORK?



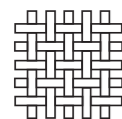
NOT ALL MICROFIBRE IS CREATED EQUAL

Studies published in peer-reviewed literature have demonstrated significant variability among different microfibre products in terms of absorbency, cleaning efficacy and microbial removal.



GRAMS PER SQUARE METER (GSM)

A measurement of the weight of a fabric. Higher GSM fabrics are typically thicker, more absorbent and more durable than lower GSM fabrics.



KNITTING PATTERNS

Knitting patterns impact the overall look and feel of a product and can affect durability, performance and intended use of the product.¹



LAUNDERING PERFORMANCE

Products that can withstand the CDC guidelines of using hot water and bleach are more effectively cleaned during laundering to help prevent cross-contamination and re-contamination of surfaces.



REMOVAL OF HARMFUL PATHOGENS

Third-party testing from an accredited laboratory is a critical step to help ensure products have been confirmed to remove harmful pathogens.



QUAT BINDING

Quat binding occurs when the common class of disinfectant, quaternary ammonium compounds, binds to product fibers. Quat binding occurs with all split-blended microfibre due to the nylon content, but the binding is significantly less than traditional products made with cotton. Polyester fibers do not bind with quat.

COMPOSITION



SPLIT-BLENDED MICROFIBRE

The percentage of strands successfully split during the splitting process is critical to cleaning performance. Splitting creates 16 separate fibers which increases the surface area to optimize the capture of debris and microbes and absorption of liquids.

MONOFILAMENT MICROFIBRE

While no splitting occurs in monofilament microfibre, it still provides better cleaning performance than cotton. Monofilament microfibre made of 100% polyester is quat safe and often used in disposable products.

THE HYGEN™ DIFFERENCE



Third-party microbe removal testing



Split-blended microfibre products are split 16 times in over 95% of the strands



Dedicated in-house textiles engineer to support product development



10 unique microfibre tests performed on all products to ensure high-quality and performance



Laundered to industry standards using CDC guidelines of hot water and bleach

¹Smith DL, Gillanders S, Holah JT, Gush C. Assessing the efficacy of different microfibre cloths at removing surface micro-organisms associated with healthcare-associated infections. J Hosp Infect 2011; 78(3): 182-6.



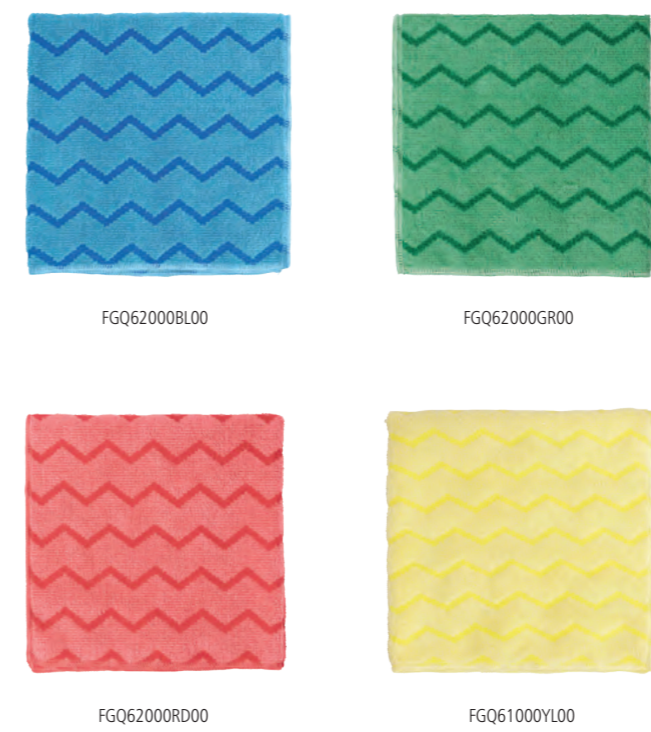
Combining superior microfibres with built-in scrubber technology, HYGEN™ Microfibre helps prevent cross-transmission and reduces the risk of healthcare-associated infections

| TESTED PATHOGEN REMOVAL* | | |
|---|----------------------------------|----------|
| | HYGEN™ DURABLE MICROFIBRE CLOTHS | |
| <i>Feline Calicivirus</i> (substitute for human norovirus) | 99.99% | Virus |
| Common human coronavirus OC43 | 99.94% | |
| <i>Pseudomonas aeruginosa</i> Pseudo | 99.99% | Bacteria |
| <i>Clostridioides difficile</i> C. diff | 99.94% | |
| Methicillin-resistant <i>Staphylococcus aureus</i> MRSA | 99.99% | |

*These products have not been tested on SARS-CoV-2, the virus that causes COVID-19.
 †Based on third-party testing on VCT surface with water only | EPA Est. No 92100-CHN-1
 4N/T = Not Tested

HYGEN™ DURABLE MICROFIBRE CLOTHS

Reduce the spread of germs with quality microfiber cloths that provide excellent cleaning performance.



500 LAUNDERINGS |
 200 LAUNDERINGS PER CDC GUIDELINES WITH BLEACH |
 290 GSM

- Removes 99.7% or more of tested virus and bacteria with water only*
- Patented zig-zag design is made of polyester for additional scrubbing power
- High-quality, 16-split microfiber penetrates deeper for a superior clean
- Colour-coded cloths help reduce cross-contamination and encourage cleaning with different colours by area or task

| REF | DESCRIPTION | DIMENSIONS (CM) | COLOUR | PACK |
|--------------|-------------------------|-------------------|--------|------|
| FGQ62000BL00 | 16" HYGEN™ CLOTH BLUE | 40,6 x 40,6 x 0.3 | | 12 |
| FGQ62000GR00 | 16" HYGEN™ CLOTH GREEN | 40,6 x 40,6 x 0.3 | | 12 |
| FGQ62000RD00 | 16" HYGEN™ CLOTH RED | 40,6 x 40,6 x 0.3 | | 12 |
| FGQ61000YL00 | 16" HYGEN™ CLOTH YELLOW | 40,6 x 40,6 x 0.3 | | 12 |

* Based on third-party testing on VCT surface with water only | EPA Est. No 92100-CHN-1



LIGHT COMMERCIAL MICROFIBRE CLOTHS

Reduce the spread of germs with quality microfibre cloths that provide excellent cleaning performance.



1820577 / 1820581



1820578 / 1820582



1820580 / 1820584



1820579 / 1820583



Warp knitting helps maintain shape when laundered



200 LAUNDERINGS



100 LAUNDERINGS PER CDC GUIDELINES WITH BLEACH



190 GSM

- Removes 99.7% or more of tested virus and bacteria with water only*
- Provides superior cleaning performance and germ removal compared to traditional cloths
- Versatile cleaning for all surfaces, use for wet cleaning or dry dusting
- Colour-coded cloths help reduce cross-contamination and encourage cleaning with different colours by area or task

| REF | DESCRIPTION | DIMENSIONS (CM) | COLOUR | PACK |
|---------|---|-------------------|--------|------|
| 1820583 | MICROFIBRE ECONOMY CLOTH 16 X 16 BLUE | 40,6 x 40,6 x 0.1 | Blue | 288 |
| 1820582 | MICROFIBRE ECONOMY CLOTH 16 X 16 GREEN | 40,6 x 40,6 x 0.1 | Green | 288 |
| 1820581 | MICROFIBRE ECONOMY CLOTH 16 X 16 RED | 40,6 x 40,6 x 0.1 | Red | 288 |
| 1820584 | MICROFIBRE ECONOMY CLOTH 16 X 16 YELLOW | 40,6 x 40,6 x 0.1 | Yellow | 288 |
| 1820577 | LIGHT COMMERCIAL MICROFIBRE CLOTH | 30,4 x 30,4 x 0.1 | Red | 288 |
| 1820578 | LIGHT COMMERCIAL MICROFIBRE CLOTH | 30,4 x 30,4 x 0.1 | Green | 288 |
| 1820579 | LIGHT COMMERCIAL MICROFIBRE CLOTH | 30,4 x 30,4 x 0.1 | Blue | 288 |
| 1820580 | LIGHT COMMERCIAL MICROFIBRE CLOTH | 30,4 x 30,4 x 0.1 | Yellow | 288 |

* Based on third-party testing on VCT surface with water only | EPA Est. No 92100-CHN-1



ELEVATOR
1

TESTED PATHOGEN REMOVAL*

| LIGHT COMMERCIAL MICROFIBRE CLOTHS | | |
|---|------------------|----------|
| <i>Feline Calicivirus</i> (substitute for human norovirus) | N/T ¹ | Virus |
| Common human coronavirus OC43 | N/T ¹ | |
| <i>Pseudomonas aeruginosa</i> Pseudo | 99.99% | Bacteria |
| <i>Clostridioides difficile</i> C. diff | 99.94% | |
| Methicillin-resistant <i>Staphylococcus aureus</i> MRSA | 99.97% | |

*These products have not been tested on SARS-CoV-2, the virus that causes COVID-19.
¹N/T = Not Tested

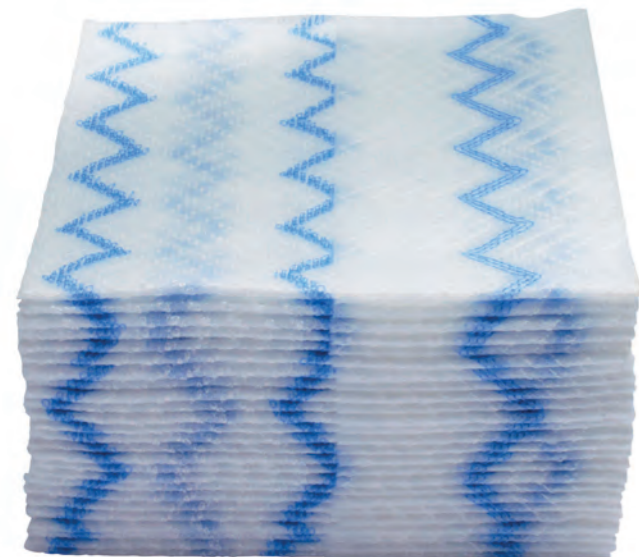




Reduce cross-contamination with disposable cloths.

DISPOSABLE MICROFIBRE CLOTHS

- 1 REMOVES 99.7% OR MORE** of tested viruses and bacteria with water only*
- 2 BUILT-IN ZIG-ZAG SCRUBBERS**
Assist to effectively remove dirt and debris
- 3 COMPATIBLE WITH THE COMMON DISINFECTANTS**
Quad, Chlorine Bleach and Hydrogen Peroxide
- 4 VERSATILE CLEANING SOLUTION**
Ideal for dusting and wet cleaning



2136053



62 GSM

TESTED PATHOGEN REMOVAL*

| | CLOTHS MICROBE REMOVAL | |
|---|------------------------|----------|
| <i>Feline Calicivirus</i> (substitute for human norovirus) | 99.97% | Virus |
| <i>Pseudomonas aeruginosa</i> Pseudo | 99.95% | Bacteria |
| <i>Clostridioides difficile</i> C. diff | 99.73% | |
| Methicillin-resistant <i>Staphylococcus aureus</i> MRSA | 99.96% | |

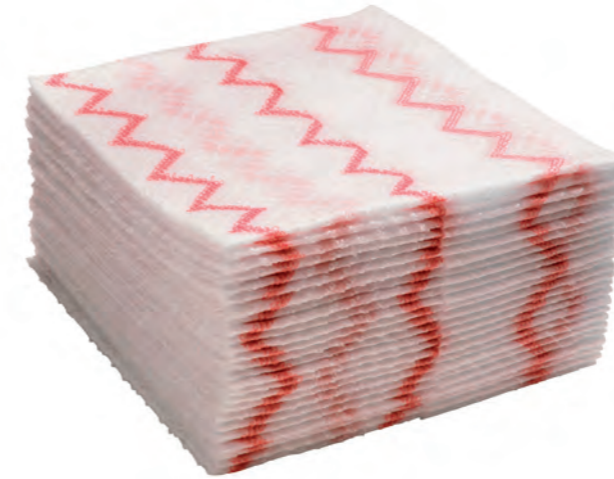
*These products have not been tested on SARS-CoV-2, the virus that causes COVID-19.



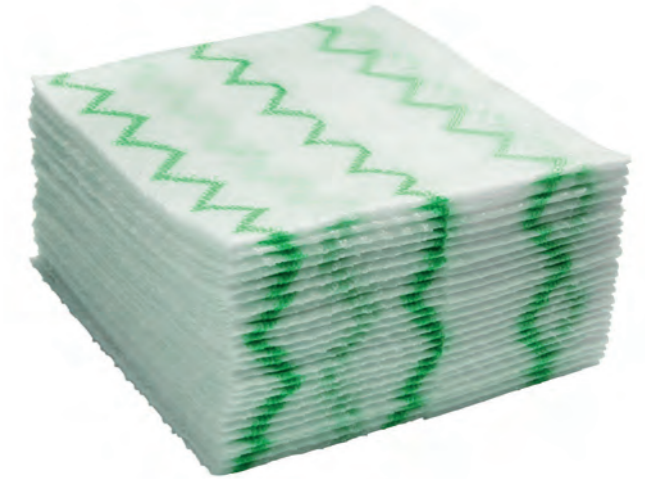
2136053



2136054



2135888



2136052

Colour-coded cloths help reduce cross-contamination and encourage cleaning with different colours by area or task

| REF | DESCRIPTION | DIMENSIONS (CM) | COLOUR | PACK |
|---------|--|-----------------|--------|------|
| 2136053 | DISPOSABLE MICROFIBRE CLOTH 640 REFILL PACK – BLUE | 30,5 x 30,5 | | 640 |
| 2136054 | DISPOSABLE MICROFIBRE CLOTH 640 REFILL PACK – YELLOW | 30,5 x 30,5 | | 640 |
| 2135888 | DISPOSABLE MICROFIBRE CLOTH 640 REFILL PACK – RED | 30,5 x 30,5 | | 640 |
| 2136052 | DISPOSABLE MICROFIBRE CLOTH 640 REFILL PACK – GREEN | 30,5 x 30,5 | | 640 |

* Based on third-party testing on VCT surface with water only | EPA Est. No 92100-CHN-1



HYGEN™ PULSE Spray Mop provides an ergonomic bucket-less mopping system to help cover more square metres in less time than traditional systems.



PULSE™ SYSTEM



FGQ96958YL00

- 1 TRIGGER HANDLE:**
Ergonomic trigger handle evenly dispenses three sprays of cleaner
- 2 EASY REFILL:**
Unscrew the cap to manually refill or connect to the PULSE™ Caddy hose for automatic refills
- 3 AESTHETIC ON-BOARD FLUID RESERVOIR:**
Holds up to 0.62l of liquid solution, allowing users to clean up to 78,9m without needing a refill



1861160

R050669

- Patented onboard reservoir and solution system evenly dispenses three sprays of cleaner behind mop
- Unscrew the cap to manually refill or connect to the PULSE™ Caddy hose for automatic refills
- Holds up to 0.6l of liquid solution
- Non-slip tip helps prevent the handle from sliding and falling when placed against a wall
- The kit includes two mops R050650

| REF | DESCRIPTION | DIMENSIONS (CM) | COLOUR | PACK |
|--------------|---|--------------------|--------|------|
| FGQ96958YL00 | RUBBERMAID PULSE™ SINGLE-SIDED FRAME | 142,2 x 12,4 x 7,2 | Yellow | 1 |
| 1861160 | RUBBERMAID PULSE™ SINGLE-SIDED FRAME | 142,2 x 12,4 x 7,2 | Grey | 1 |
| R050669 | RUBBERMAID PULSE™ KIT SINGLE-SIDED + 2 MOPS R050650 | 142,2 x 12,4 x 7,2 | Yellow | 1 |

PULSE™ ACCESSORIES

HYGEN™ PULSE™ High-Capacity Caddy allows users to easily clean more square metres, reducing the frequency of trips to the supply closet. High-capacity backpack allows for more efficient floor finishing.



RUBBERMAID PULSE™ REFILL CADDY:

- Capacity: 7.5L which refills Rubbermaid PULSE™ up to 12 times
- Designed to fit in Rubbermaid Cleaning Carts for efficient on-the-go refills

RUBBERMAID FLOW™ BACKPACK:

- Holds 5.6L for cleaning up to 820m² of floor surface
- Chest and waist straps distribute weight onto user's hips instead of shoulders, reducing user strain
- Backpack features venting channels to improve airflow and reduce moisture on back while wearing

| REF | DESCRIPTION | DIMENSIONS (CM) | COLOUR | PACK |
|--------------|------------------------------------|--------------------|--------|------|
| FGQ966000000 | RUBBERMAID PULSE™ REFILL CADDY | 35,9 x 22,2 x 27,3 | ○ | 1 |
| 1829092 | RUBBERMAID FLOW™ BACKPACK (954 G.) | 53 x 41 x 10 | ● ● | 1 |

MICROFIBRE PADS & WET PADS

HYGEN™ Microfibre Wet Mop Pads are constructed of premium 16-split nylon/polyester blend microfibre that provides high-efficacy wet mopping performance.

R050650
 R034556
 R050647
 2061053
 2061054
 2061055
 2061056

Built-in scrubbers
Coloured edge tape allows quick identification by use or area to help reduce cross-contamination

| TESTED PATHOGEN REMOVAL* | |
|--|--------|
| <i>Feline Calicivirus</i> (substitute for human norovirus) | 99.97% |
| Common human coronavirus OC43 | 99.99% |
| <i>Pseudomonas aeruginosa</i> Pseudo | 99.99% |
| <i>Clostridioides difficile</i> C. diff | 99.94% |
| Methicillin-resistant <i>Staphylococcus aureus</i> MRSA | 99.99% |

500 LAUNDERINGS | 200 LAUNDERINGS PER CDC GUIDELINES WITH BLEACH | 530 GSM

*These products have not been tested on SARS-CoV-2, the virus that causes COVID-19.

- Patented zig-zag scrubbing strips for cleaning tough, dried on stains
- Coloured edge tape allows quick identification by use or area to help reduce cross-contamination
- Velcro attach system
- High absorbency mop holds up to 0.7L of liquid

| REF | DESCRIPTION | DIMENSIONS (CM) | COLOUR | PACK |
|---------|--|-----------------|--------|------|
| R050650 | MICROFIBRE WET MOP 40 CM | 40 x 14 x 1,6 | ● | 10 |
| R034556 | MICROFIBRE SCRUBBER MOP 40 CM | 40 x 14 x 1,6 | ● | 10 |
| R050647 | MICROFIBRE HIGH ABSORBENCY WET MOP 40 CM | 40 x 14 x 1,6 | ● | 10 |
| 2061053 | MICROFIBRE WET PAD 40CM CODED BLUE | 40 x 14 x 1,6 | ● | 10 |
| 2061054 | MICROFIBRE WET PAD 40CM CODED RED | 40 x 14 x 1,6 | ● | 10 |
| 2061055 | MICROFIBRE WET PAD 40CM CODED GREEN | 40 x 14 x 1,6 | ● | 10 |
| 2061056 | MICROFIBRE WET PAD 40CM CODED YELLOW | 40 x 14 x 1,6 | ● | 10 |



Reduce cross-contamination with disposable pads.

DISPOSABLE MICROFIBRE PADS

- 1 **REMOVES 99.7% OR MORE** of tested viruses and bacteria with water only*
- 2 **BUILT-IN ZIG-ZAG SCRUBBERS**
Assist to effectively remove dirt and debris
- 3 **COMPATIBLE WITH THE COMMON DISINFECTANTS**
Quad, Chlorine Bleach and Hydrogen Peroxide
- 4 **PADS IDEAL TO BE USED WITH PULSE™ MICROFIBRE CLEANING SYSTEM**



2135890



340 GSM

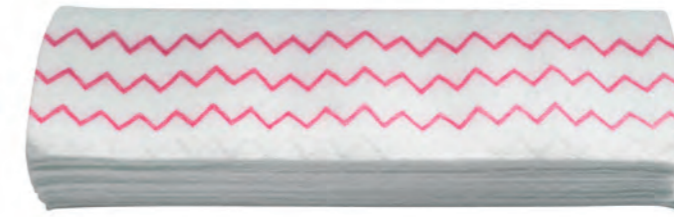
TESTED PATHOGEN REMOVAL*

| | PADS MICROBE REMOVAL | |
|---|----------------------|----------|
| <i>Feline Calicivirus</i> (substitute for human norovirus) | 99.97% | Virus |
| <i>Pseudomonas aeruginosa</i> Pseudo | 99.99% | Bacteria |
| <i>Clostridioides difficile</i> C. diff | 99.87% | |
| Methicillin-resistant <i>Staphylococcus aureus</i> MRSA | 99.97% | |

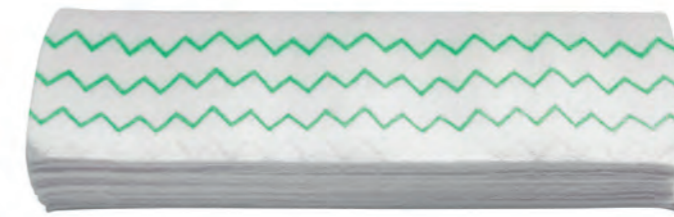
*These products have not been tested on SARS-CoV-2, the virus that causes COVID-19.



2136051



2135887



2135889

Colour-coded cloths help reduce cross-contamination and encourage cleaning with different colours by area or task.

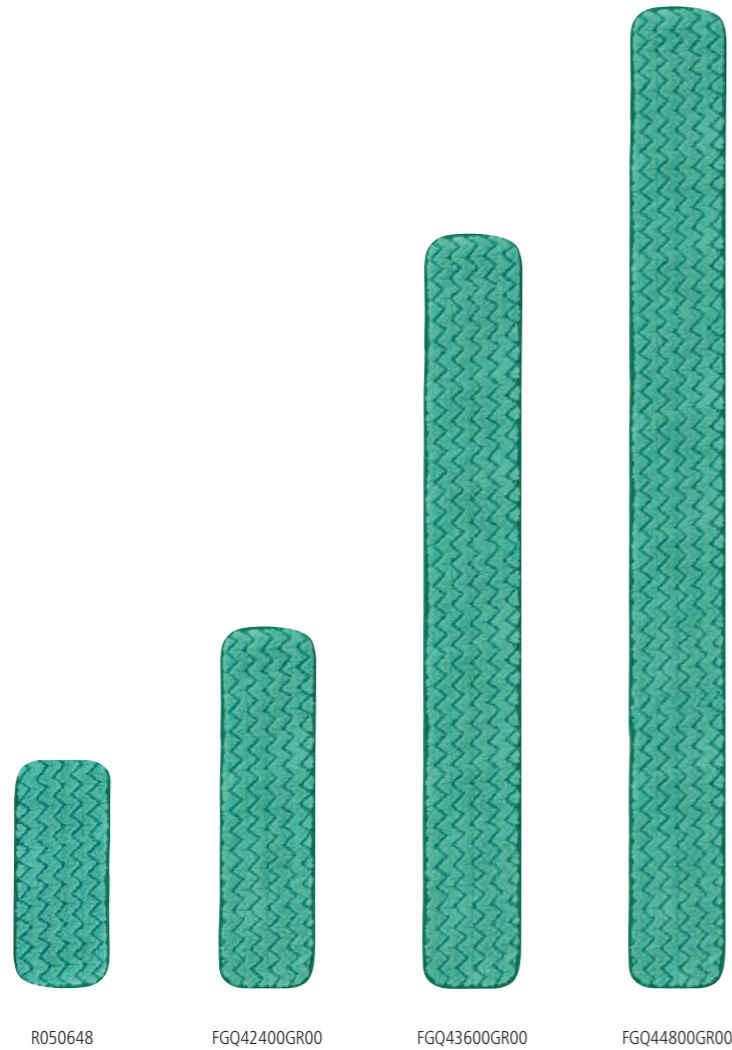
| REF | DESCRIPTION | DIMENSIONS (CM) | COLOUR | PACK |
|---------|--|-----------------|--------|------|
| 2135890 | DISPOSABLE MICROFIBRE MOP PAD – BLUE | 48,3 x 14 | | 150 |
| 2136051 | DISPOSABLE MICROFIBRE MOP PAD – YELLOW | 48,3 x 14 | | 150 |
| 2135887 | DISPOSABLE MICROFIBRE MOP PAD – RED | 48,3 x 14 | | 150 |
| 2135889 | DISPOSABLE MICROFIBRE MOP PAD – GREEN | 48,3 x 14 | | 150 |

* Based on third-party testing on VCT surface with water only | EPA Est. No 92100-CHN-1



MICROFIBRE DUST PADS

Dusting is an important first step of floor care as it removes dust, dirt and debris prior to wet mopping.



- Trap and lock away dust, dirt and debris
- Patented zig-zag design is made of polyester for additional scrubbing power
- Double finished edges retain mop shape with use over time

| REF | DESCRIPTION | DIMENSIONS (CM) | COLOUR | PACK |
|--------------|------------------------------------|--------------------|--------|------|
| R050648 | HYGEN™ MICROFIBRE DUST MOP 40 CM | 40 x 14 x 1,6 | ● | |
| FGQ43600GR00 | 36" DRY HALL PAD | 100,3 x 13,2 x 1,2 | ● | |
| FGQ42400GR00 | 24" DRY HALL PAD | 69,8 x 13,2 x 1,2 | ● | |
| FGQ44800GR00 | MICROFIBRE DRY HALL PAD 48IN/121CM | 130,8 x 13,2 x 1,2 | ● | |

QUICK CONNECT HANDLES

Quick Connect handles make cleaning an efficient task in every area of the facility. The unique connection mechanism allows for easy, quick tool exchange.

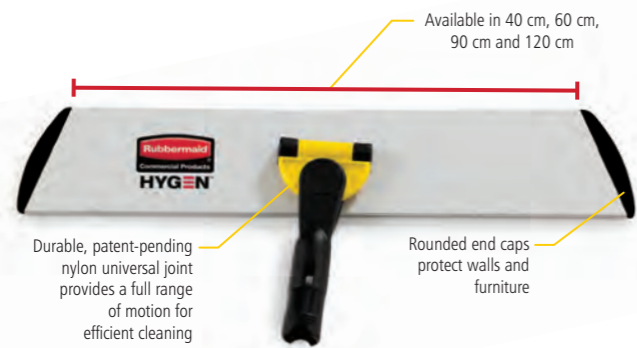


- Lightweight aluminium construction is safe for MRI rooms
- Handles available in straight or ergonomic bend styles, in adjustable lengths from 115 cm to 186 cm
- Extension poles make quick work of high-reach cleaning tasks, with lengths up to 548.6 cm

| REF | DESCRIPTION | DIMENSIONS (CM) | COLOUR | PACK |
|--------------|--|---|--------|------|
| FGQ75000YL00 | TRADITIONAL MOP HANDLE 147 CM | 147 x Ø 2.1 cm | ● | 6 |
| FGQ760000000 | ERGONOMIC TELESCOPIC MOP HANDLE 115 - 186 CM | opened: 186.0 x Ø 3.0 / closed: 115.0 x Ø 3.0 cm | ● | 6 |
| FGQ74500YL00 | SHORT EXTENSION HANDLE 50.8 - 101 CM | opened: 101.6 x Ø 5.1 / closed: 50.8 x Ø 5.1 cm | ● | 6 |
| FGQ75500YL00 | STRAIGHT EXTENSION HANDLE 121.9 - 182.9 CM | opened: 182.9 x Ø 5.3 / closed: 121.9 x Ø 5.3 cm | ● | 6 |
| FGQ77500YL00 | LARGE EXTENSION POLE 182.9 - 548.6 CM | opened: 548.6 x Ø 5.3 / closed: 182.9 x Ø 5.3 cm | ● | 3 |

QUICK CONNECT FRAMES

Quick Connect Frames feature a flat profile that slides easily under furniture and equipment.



R034562



FGQ58000YL00



FGQ59000YL00



FGQ57000YL00

- The trapezoidal shape improves cleaning in corners and other hard-to-reach areas
- Lightweight aluminium construction is safe for MRI rooms
- Attach all Rubbermaid HYGEN™ Microfibre Damp and Dust Mops
- Rounded plastic end caps help protect walls and furniture

| REF | DESCRIPTION | DIMENSIONS (CM) | COLOUR | PACK |
|--------------|--|-----------------|--------|------|
| R034562 | ALUMINIUM FRAME WITH VELCRO 40 CM | 40 x 9 x 3,8 | ● | 10 |
| FGQ57000YL00 | ALUMINIUM FRAME WITH VELCRO AND SQUEEGEE 60 CM | 61 x 11,3 x 3,8 | ● | 6 |
| FGQ58000YL00 | ALUMINIUM FRAME WITH VELCRO 90 CM | 91,5 x 9 x 3,8 | ● | 6 |
| FGQ59000YL00 | ALUMINIUM FRAME WITH VELCRO 120 CM | 122 x 90 x 3,9 | ● | 6 |

HYGEN™ CHARGING & WRING BUCKETS

The Charging Bucket charges the microfibre mop pads with cleaning chemicals and is designed to prevent oversaturation.



FGQ95088YL00



1863892



FGQ90088YL00

HYGEN™ MICROFIBRE CHARGING BUCKET

- Bucket is designed with molded-in grates to prevent oversaturation of microfibre mops
- All-plastic bucket holds 10–20 microfibre damp mops
- A comfort grip handle makes the bucket easy to transport
- Buckets work with all Rubbermaid HYGEN™ Microfibre Cleaning Carts

HYGEN™ MICROFIBRE PAD PRESS WRING BUCKET

- Floor drain for fast emptying
- Press sieve provides easy, "no-touch" wringing
- Ideal for flat mopping

| REF | DESCRIPTION | DIMENSIONS (CM) | COLOUR | PACK |
|--------------|--|--------------------|--------|------|
| FGQ95088YEL | HYGEN MICROFIBRE CHARGING BUCKET 24" YEL | 60,6 x 24,1 x 34,6 | ● | 3 |
| 1791802 | HYGEN MICROFIBRE CHARGING BUCKET W/SIEVE | 60,6 x 24,1 x 34,6 | ● | 3 |
| FGQ90088YL00 | HYGEN MICROFIBRE PAD PRESS WRING BUCKET | 66,5 x 36,8 x 40,8 | ● | 1 |

FLEXI FRAME RANGE

Flexible mop frame conforms to the shape of the surface being cleaned. Ideal for wet floor care around corners and small areas.



- Patent-pending internal structure maintains consistent pressure on the surface being cleaned, even at the edges, and flexes back to original shape.
- Proprietary flexible compound will not crack or split, even when used with bleach or peroxide
- Arc shape pulls dirt, hair, and debris toward the center to make debris pick up faster
- Use hand-held or with HYGEN™ Quick-Connect handles

| REF | DESCRIPTION | DIMENSIONS (CM) | COLOUR | PACK |
|--------------|------------------------------------|-----------------|--------------|------|
| FGQ85500BK00 | HYGEN™ FLEXI-FRAME | 28 x 11 | Black/Yellow | 6 |
| FGQ89100BL00 | HYGEN™ FLEXI-FRAME WET PAD | 29 x 11 | Blue | 12 |
| FGQ88100YL00 | HYGEN™ FLEXI-FRAME SCRUBBING PAD | 29 x 11 | Yellow | 12 |
| FGQ86100WH00 | HYGEN™ FLEXI-FRAME HI-PILE PAD | 29 x 11 | White | 12 |
| FGQ87100BL00 | HYGEN™ FLEXI-FRAME GLASS PAD COVER | 29 x 11 | Light Blue | 12 |

FLEXIBLE DUSTING KIT

Dusting is an important first step of floor care as it removes dust, dirt and debris prior to wet mopping.



- Velcro type assembly and elastic band keep sleeve well fastened
- Quick Connect mechanism converts this hand-held duster to an extended cleaning tool
- Can be used dry only
- 100% cut-end microfiber
- For more heavily soiled areas and hair removal - FGQ85200WH00 can be used dry or damp

| REF | DESCRIPTION | DIMENSIONS (CM) | COLOUR | PACK |
|--------------|--|-----------------|--------|------|
| FGQ85000BK00 | QUICK CONNECT FLEXIBLE DUSTING WAND WITH MICROFIBRE | 72,5 x 5,7 x 1 | Green | 6 |
| FGQ85100GR00 | WAND DUSTER MICROFIBRE REPLACEMENT SLEEVE | 53 x 8 x 2,5 | Green | 6 |
| FGQ85200WH00 | QUICK CONNECT FLEXIBLE DUSTING WAND WITH HIGH PERFORMANCE MICROFIBRE | 72,5 x 5,7 x 1 | White | 6 |
| FGQ85300WH00 | WAND DUSTER HIGH PERFORMANCE MICROFIBRE REPLACEMENT SLEEVE | 53 x 8 x 2,5 | White | 6 |

CLEANING BUCKETS

A complete range of durable plastic buckets for multi-purpose uses.



- Available in different sizes from 5 l to 18 l
- Available in different colours to facilitate colour-coding
- The carry caddy fits on most cleaning or housekeeping carts and is perfect for carrying tools or cleaning supplies

| REF | DESCRIPTION | DIMENSIONS (CM) | COLOUR | PACK |
|--------------|----------------------|--------------------|--------|------|
| R050768 | BUCKET 5 L | 22 x 20,5 x 21,5 | Red | 10 |
| R050769 | BUCKET 5 L | 22 x 20,5 x 21,5 | Yellow | 10 |
| R050770 | BUCKET 5 L | 22 x 20,5 x 21,5 | Green | 10 |
| R050771 | BUCKET 5 L | 22 x 20,5 x 21,5 | Blue | 10 |
| FG262888GRAY | DOUBLE BUCKET 18 L | 45,7 x 36,8 x 25,4 | Gray | 6 |
| 1880994 | EXEC CARRY CADDY BLA | 38,7 x 28,6 x 4,4 | Black | 6 |

WAVEBRAKE®

The new generation of WaveBrake® helps to clean floors with less effort to get the job done safer, without sacrificing quality and durability.



- Molded-in WaveBrake baffles disrupt wave formation, reducing splash up to 80% versus leading competitors
- Rated handles, sink ledge, and a pour spout provide control while lifting and emptying, for a safe and stable emptying process
- Integrated handles and sink ledge lift and empty the mop bucket easily, with less strain
- The side-press and down-press wringers are designed to last 5-years or 200,000 cycles

| REF | DESCRIPTION | DIMENSIONS (CM) | COLOUR | PACK |
|--------------|------------------------------------|--------------------|--------|------|
| FG757788YEL | WAVEBRAKE® DOWN PRESS COMBO | 51,6 x 41,7 x 54,9 | Yellow | 1 |
| FG757888GRN | WAVEBRAKE® DOWN PRESS COMBO | 51,6 x 41,7 x 54,9 | Green | 1 |
| FG757888RED | WAVEBRAKE® DOWN PRESS COMBO | 51,6 x 41,7 x 54,9 | Red | 1 |
| FG757888BLUE | WAVEBRAKE® DOWN PRESS COMBO | 51,6 x 41,7 x 54,9 | Blue | 1 |
| FG758088YEL | WAVEBRAKE® SIDE PRESS COMBO | 51,6 x 41,7 x 54,9 | Yellow | 1 |
| 2119771 | WAVEBRAKE® DOUBLE BUCKET | 51,5 x 41,7 x 54,9 | Blue | 1 |
| 2064907 | WAVEBRAKE® DIRTY WATER BUCKET 17 L | 38,5 x 24,7 x 35,5 | Red | 6 |

INVADER® MOP HANDLES

Invader® Wet Mop Handles make removing and replacing mop heads easy and efficient.



FGH14600BL00



FGH14600GY00

- Invader® Side Gate Handle's thumb wheel clamps the mop firmly in place
- Should be used with 12.7 cm headband mops
- 2 different handles available: aluminium or fibreglass

| REF | DESCRIPTION | DIMENSIONS (CM) | COLOUR | PACK |
|--------------|---|-----------------|--------|------|
| FGH14600BL00 | INVADER® SIDEGATE MOP HANDLE 60" FIBREGLASS BLU | 152.4 | | 12 |
| FGH14600GY00 | INVADER® SIDEGATE MOP HANDLE 60" FIBREGLASS YEL | 152.4 | | 12 |

STRING MOPS

A wide range of string mops to meet the needs of any facility.



WEB FOOT® MICROFIBRE TUBE MOP

- Constructed with a blend of continuous-filament microfibre and polyester for superior absorbency and release characteristics
- Contains antimicrobial product protection to inhibit the growth of bacteria that causes odours and stains
- PVC-coated mesh headband prohibits moisture retention and resists chemicals for longer product life
- Premium launderability, up to 200 commercial launderings



WEB FOOT® MICROFIBRE STRING MOP

- Designed with looped ends and blend yarn that has built-in antimicrobial protection – lengthening the mops' useful life and giving floors a superior clean
- Pre-laundered and pre-shrunk for long-lasting performance
- PVC-coated mesh headband for longer product life
- Double-stitched tailband improves durability and eliminates streaking
- Premium launderability, up to 100 commercial launderings



KENTUCKY MOP

- Looped-ends and tail banding reduces tangling for like-new performance after every laundering
- The 4-ply, balanced blend of cotton withstands repeated laundering without shrinkage

| REF | DESCRIPTION | WEIGHT | COLOUR | PACK |
|--------------|---------------------------------|--------|--------|------|
| FGT81206GR00 | WEB FOOT® MICROFIBRE TUBE MOP | 400 g | | 6 |
| FGA81206GR00 | WEB FOOT® MICROFIBRE STRING MOP | 350 g | | 6 |
| R014177 | KENTUCKY MOP | 400 g | | 25 |

MECHANICAL SWEEPERS

A complete line of commercial sweepers for hard floors and carpets. Constructed of durable galvanised steel and tough ABS plastic.



FLOOR AND CARPET SWEEPER

- Low-profile design provides easy access around and under furniture
- Efficient 16.5 cm sweep path
- For bare floors or low pile carpets

DUAL ACTION SWEEPER

- Two types of brushes provide maximum cleaning and versatility
- Dual debris pans with one-touch cleaning doors
- Soft rubber wheels and brushes conform to floor surface
- Designed for large debris as well as smaller crumbs and dirt

BRUSHLESS MECHANICAL SWEEPER

- Non-marking rubber blades that effectively sweep up dust, debris, and spills from a variety of floor surfaces
- Low profile for easy access around and under furniture
- Tinted window allows you to see when the sweeper needs emptying
- Soft rubber wheels glide easily on carpet, vinyl, tile, wood, and more

| REF | DESCRIPTION | DIMENSIONS (CM) | COLOUR | PACK |
|-------------|------------------------------|---------------------|--------|------|
| FG421288BLA | FLOOR AND CARPET SWEEPER | 24,1 x 20,3 x 111,8 | ● | 4 |
| FG421388BLA | DUAL ACTION SWEEPER | 26,7 x 24,1 x 111,8 | ● | 4 |
| FG421588BLA | BRUSHLESS MECHANICAL SWEEPER | 26,7 x 24,1 x 111,8 | ● | 4 |

LOBBY PRO® AND DUST PAN

A range of pans and a matching broom for cleaning in any environment.



- Reduces strain on staff by minimising bending and stooping
- Dustpan constructed of durable injection-molded plastic with vinyl
- Coated metal handle
- Ideal for one-handed sweeping and cleaning
- Will not stain, discolour, or absorb odours
- Lobby broom (FG637400BLA) is made of tough polypropylene with flagged bristles trap fine particles to push into a dustpan

| REF | DESCRIPTION | DIMENSIONS (CM) | COLOUR | PACK |
|--------------|---------------------------------|--------------------|--------|------|
| FG253100BLA | LOBBY PRO® DUST PAN WITHOUT LID | 32,4 x 28,6 x 12,7 | ● | 6 |
| FG253200BLA | LOBBY PRO® DUST PAN WITH LID | 32,4 x 28,6 x 12,7 | ● | 6 |
| FG253500BLA | HANGER BRACKET | 3,2 x 3,2 x 10,2 | ● | 6 |
| FG200500CHAR | SMALL DUST PAN | 31,1 x 21 x 6,7 | ● | 12 |
| FG637400BLA | LOBBY BROOM | 19,1 x 5,1 x 88,9 | ● | 6 |

MAXIMIZER DEBRIS PAN

The Maximizer Debris Pan allows efficient removal of wet and dry debris.



2018806

- Holds 10x more liquid* for efficient clean up and less rework
- The wide opening allows liquid and solid debris to easily collect in the pan
- Molded-in baffles keep both dry and wet debris from leaking back onto floors

| REF | DESCRIPTION | DIMENSIONS (CM) | COLOUR | PACK |
|---------|------------------------------|--------------------|--------|------|
| 2018806 | MAXIMIZER WET/DRY DEBRIS PAN | 73,6 x 42,9 x 30,4 | ● | 6 |



JANITORIAL CART

The Traditional Janitorial Cleaning Cart is lightweight and maneuverable to collect waste and transports tools for efficient cleaning.



- Water and chemical resistant surface provides easy maintenance and long-lasting good looks
- 11 tool hooks make room for all your cleaning needs, such as brooms, mops, dustpans, dusters, and safety signs
- Delivered with zipped yellow bag (92 l) for easy waste removal
- 186074 contains 4 swivel wheels (10.2 cm) and 1805985 contains 2 fixed casters at the back side (20.1 cm) and 2 swivel wheels (10.2 cm) at the front side

| REF | DESCRIPTION | DIMENSIONS (CM) | COLOUR | PACK |
|---------|--|---------------------|--------|------|
| 1860740 | JANITOR CART WITH BAG (4 SWIVEL WHEELS) | 116,8 x 55,2 x 97,5 | ● | 1 |
| 1805985 | JANITOR CART (2 FIXED CASTERS / 2 SWIVEL WHEELS) | 116,8 x 55,2 x 97,5 | ● | 1 |

MICROFIBRE CART

Flexible high-capacity cart offers 40% more storage space than traditional carts to carry additional supplies and maximises staff productivity.



- Mop bucket platform with securing grooves keeps WaveBrake® or microfibre charging buckets securely attached to cart
- Interchangeable handles and removable platform allow user to easily expand or reduce the footprint of the cart to meet specific cleaning and storage needs
- Rubber tool grips and hooks securely hold up to 5 stick goods, while hooks hold up to 4 safety signs
- Included: 4 colour-coded buckets, 2 yellow organising boxes, 1 waste cover and storage compartment and 1 yellow high capacity vinyl bag

| REF | DESCRIPTION | DIMENSIONS (CM) | COLOUR | PACK |
|-------------|--------------------------|----------------------|--------|------|
| FG9T7400BLA | MICROFIBRE CLEANING CART | 122,5 x 55,8 x 111,7 | ● | 1 |

HIGH CAPACITY CLEANING CART

Flexible high-capacity cart is a storage solution and tool organiser that makes waste collection and transport of cleaning equipment easy and efficient.



FG9T7200BLA

- Mop bucket platform with securing grooves keeps WaveBrake® or microfibre charging buckets securely attached to cart
- Water and chemical resistant surface provides easy maintenance and long-lasting good looks
- Interchangeable handles and removable platform allow user to easily expand or reduce the footprint of the cart to meet specific cleaning and storage needs
- Rubber tool grips and hooks securely hold up to 5 stick goods, while hooks hold up to 4 safety signs
- Included: two removable 9 l Disinfecting Caddies (FG9T8200YEL), 2 swivel casters and 2 wheels and high capacity bag 128 l (1966881)

| REF | DESCRIPTION | DIMENSIONS (CM) | COLOUR | PACK |
|-------------|--------------------|-------------------------|--------|------|
| FG9T7200BLA | HIGH CAPACITY CART | 126,37 x 56,62 x 112,08 | ● | 1 |





The High-Security Janitorial Cleaning Cart is a secure cart, featuring quiet casters and ball-bearing wheels along with a preassembled locking hood and doors.

HIGH SECURITY CLEANING CART



- 1 COMFORT GRIP CART HANDLE** provides better manoeuvrability and includes lobby dust pan vacuum holder
- 2 SECURE CABINET DOORS** keep cleaning supplies concealed from view and locked up when carts are unattended
- 3 MOP BUCKET PLATFORM** with securing grooves keeps WaveBrake® or microfibre charging buckets securely attached to cart
- 4 PREASSEMBLED LOCKING SECURITY** hood speeds up assembly and ensures all products will be secure



- The High Security Janitorial Cleaning Cart provides 40% more storage space than traditional carts, minimises trips for additional supplies and with that maximises staff productivity
- Included: 9 l Disinfecting Caddies (FG9T8200YEL), high capacity bag 128 l (1966881), locking cabinet doors, locking security hood, waste cover, quiet casters and 2 wheels

| REF | DESCRIPTION | DIMENSIONS (CM) | COLOUR | PACK |
|-------------|-----------------------------|----------------------|--------|------|
| FG9T7500BLA | HIGH SECURITY CLEANING CART | 122.5 x 55.9 x 135.9 | ● | 1 |



The Executive Quick Cart is the industry's most durable mobile cart solution for housekeeping, janitorial and maintenance environments.

QUICK CARTS



1902465

- 1 ADJUSTABLE DIVIDERS**
Dividers can be moved or removed to create multiple compartments to meet your specific cleaning needs
- 2 SECURED STICK GOODS**
Heavy-duty fastening strap wraps around supplies to keep them secure while the cart is in motion
- 3 SECURE SUPPLIES**
Durable lid conceals supplies and features hardware for adding a lock to prevent unauthorised access to cart and its contents
- 4 REMOVABLE CARRY CADDY**
Rigid dividers improve efficiency, keeping amenities and supplies organised



1902467

1902466

1902465

- Compact design remains inconspicuous by blending into public areas and disappearing into guest rooms
- Lightweight and more compact than traditional carts for easier manoeuvrability in tight spaces
- Repels oil, water and stains with Teflon® fabric protector coating to maintain aesthetics and protect against daily use
- Secure stick goods with heavy-duty strap and large front pocket
- Adjustable dividers help organise amenities and supplies

| REF | DESCRIPTION | DIMENSIONS (CM) | COLOUR | PACK |
|---------|-------------------|--------------------|--------|------|
| 1902467 | SMALL QUICK CART | 41,9 x 36,2 x 43,1 | ● | 1 |
| 1902466 | MEDIUM QUICK CART | 41,9 x 36,2 x 53,3 | ● | 1 |
| 1902465 | LARGE QUICK CART | 41,9 x 36,2 x 63,5 | ● | 1 |

QUICK CART ACCESSORIES

The Executive Quick Cart Caddy is great for organising amenities with its adjustable and removable dividers.



1902459



1902468



1919270



1902701

- The Executive Quick Cart Caddy is available in two different sizes and is the ideal portable accessory for efficient cleaning throughout a facility.
- The Executive Quick Cart Plastic Pocket Liner is a replacement liner that is compatible with all of the Executive Quick Carts sizes – large, medium & small (1919270).
- The Executive Quick Cart Liners are inner replacement liners for the Quick Cart available in three different sizes.

| REF | DESCRIPTION | DIMENSIONS (CM) | COLOUR | PACK |
|---------|--------------------------------------|--------------------|--------|------|
| 1902459 | QUICK CART CADDY SMALL | 26,6 x 27,9 x 13,9 | ● | 1 |
| 1902468 | QUICK CART CADDY LARGE | 35,5 x 27,9 x 13,9 | ● | 1 |
| 1919270 | QUICK CART PLASTIC POCKET LINER | 9,5 x 10,1 x 21,5 | ● | 1 |
| 1902703 | QUICK CART REPLACEMENT LINER, SMALL | 40,6 x 32,3 x 36,8 | ● | 1 |
| 1902702 | QUICK CART REPLACEMENT LINER, MEDIUM | 40,6 x 32,3 x 46,9 | ● | 1 |
| 1902701 | QUICK CART REPLACEMENT LINER, LARGE | 40,6 x 32,3 x 56,5 | ● | 1 |





The Executive Compact Housekeeping Cart is a complete system solution for efficient housekeeping.

EXECUTIVE HOUSEKEEPING CART



- 1 LIGHTWEIGHT AND ERGONOMIC DESIGN** allows for easy maneuverability and optimum comfort
- 2 IMPACT-ABSORBING AND NON-MARRING BUMPERS** are designed to reduce costly wall damage
- 3 FULL-SIZE CABINET** offers exceptional storage space and an adjustable middle shelf
- 4 DOUBLE BAG CAPACITY** allows for multiple collection streams such as linens and waste or recycling with watertight PVC lining



FG618900BLA



FG619000BLA

- The standard equipment for the Executive Housekeeping Cart includes the fabric bag, bumpers, a vacuum holder, and an under-deck shelf.

| REF | DESCRIPTION | DIMENSIONS (CM) | COLOUR | PACK |
|-------------|------------------------------------|--------------------|--------|------|
| FG618900BLA | LARGE EXECUTIVE HOUSEKEEPING CART | 152,4 x 55,8 x 127 | ● | 1 |
| FG619000BLA | MEDIUM EXECUTIVE HOUSEKEEPING CART | 124,4 x 55,8 x 127 | ● | 1 |

X-CART

Folding carts designed & tested to deliver reliable long-lasting performance.



1871643



1871644

- Collapsible frame enables efficient storage by reducing footprint up to 75%
- Compact, lightweight design for superior manoeuvrability
- Durable, high capacity (100kg) vinyl bag accommodates large loads; easy-to-clean
- 2-stream configuration for sorting, facilitated by colour ribbons to avoid cross-contamination
- Frames and bags sold separately
- Multiple, built-in storage pockets on each side keep frequently used cleaning tools and supplies within reach
- Convenient, quick access lid provides easy access to contents inside of cart without having to remove cover; secures with Velcro trim

| REF | DESCRIPTION | DIMENSIONS (CM) | COLOUR | PACK |
|---------|--|--------------------|--------|------|
| 1871643 | X-CART FRAME 150L | 39 x 56,9 x 69,3 | ● | 1 |
| 1871644 | X-CART FRAME 300L | 78 x 56,9 x 69,3 | ● | 1 |
| 1871645 | X-CART BLACK BAG 150L | 39 x 56,9 x 69,3 | ● | 1 |
| 1871646 | X-CART BLACK BAG 300L | 78 x 56,9 x 69,3 | ● | 1 |
| 1889863 | X-CART COVER – SMALL (FITS 150L MODEL) | 64.4 x 50.4 x 22.8 | ● | 1 |
| 1889864 | X-CART COVER – LARGE (FITS 300L MODEL) | 88.9 x 66.6 x 22.8 | ● | 1 |



CLEANING CART ACCESSORIES



| REF | DESCRIPTION | | 1805985 | 1860740 | FG9T7200BLA | FG9T7400BLA | FG9T7500BLA | FG618900BLA | FG619000BLA | FG9T7800BLA |
|-------------|-------------------------------------|--|--------------------------|----------------------------------|-----------------------------|--------------------|--|-----------------------------------|------------------------------------|---|
| | | | JANITORIAL CART WITH BAG | JANITORIAL CART 4 SWIVEL CASTERS | HIGH CAPACITY CLEANING CART | MICROFIBRE CART | HIGH-SECURITY JANITORIAL CLEANING CART | EXECUTIVE LARGE HOUSEKEEPING CART | EXECUTIVE MEDIUM HOUSEKEEPING CART | EXECUTIVE HOUSEKEEPING COMPACT CART HIGH-SECURITY |
| 1966719 | VINYL REPLACEMENT BAG | | ALREADY INCLUDED | ALREADY INCLUDED | | | | | | |
| 1966881 | VINYL BAG | | ● | ● | ALREADY INCLUDED | ALREADY INCLUDED | ALREADY INCLUDED | | | ● |
| 1966882 | RECYCLING BAG | | ● | ● | ● | ● | ● | | | ● |
| 1966883 | RECYCLING BAG | | ● | ● | ● | ● | ● | | | ● |
| 1966884 | RECYCLING BAG | | ● | ● | ● | ● | ● | | | ● |
| 1966885 | JAN CLEAN CART VINYL BAG 34 GAL BRN | | | | | | | ALREADY INCLUDED | ALREADY INCLUDED | |
| 1966888 | COMPACT FABRIC REPLACEMENT BAG | | ● | ● | ● | ● | ● | | | ALREADY INCLUDED |
| 1966889 | FABRIC MESH LINEN BAG | | ● | ● | ● | ● | ● | ● | ● | ● |
| FG9T8301000 | CODED BUCKETS, SET OF 4 COLOURS | | ● | ● | ● | ALREADY INCLUDED | ● | | | |
| FG9T8400YEL | ORGANISING BOXES | | | | ● | 2 ALREADY INCLUDED | ● | | | ● |
| FG9T8200YEL | DISINFECTING CADDIES | | | | 2 ALREADY INCLUDED | | ALREADY INCLUDED | | | ALREADY INCLUDED |

● = FITS WITH

CLEANING CART ACCESSORIES



| REF | DESCRIPTION | 1805985 JANITORIAL CART WITH BAG | 1860740 JANITORIAL CART 4 SWIVEL CASTERS | FG9T7200BLA HIGH CAPACITY CLEANING CART | FG9T7400BLA MICROFIBRE CART | FG9T7500BLA HIGH-SECURITY JANITORIAL CLEANING CART | FG618900BLA EXECUTIVE LARGE HOUSEKEEPING CART | FG619000BLA EXECUTIVE MEDIUM HOUSEKEEPING CART | FG9T7800BLA EXECUTIVE HOUSEKEEPING COMPACT CART HIGH-SECURITY |
|--------------|--|-------------------------------------|---|--|--------------------------------|---|--|---|--|
| FG9T9000BLA | POCKET FABRIC ORGANISER | ● | ● | ● | ● | ● | ● | ● | ● |
| FG619700BLA | 2 LOCKING DOORS | | | | | | ● | ● | ● |
| FG9T89010000 | TRIPLE WASTE BAG HOLDER | | | ● | ● | ● | | | ● |
| FG9T0000BLA | PROTECTIVE SECURITY HOOD TO HK CART | | | | | | ● | ● | |
| FG9T8600BLA | SECURITY COMPARTMENT | | | ● | ● | ALREADY INCLUDED | | | ALREADY INCLUDED |
| FG617900BLA | WASTE COVER | ● | ● | ● | ALREADY INCLUDED | ALREADY INCLUDED | | | ● |
| FGQ95088 | CHARGING BUCKET | ● | ● | ● | ● | ● | | | |
| FG618100YEL | LOCKING CABINET FOR JANITOR CART | ● | ● | | | | | | |
| FGU21000WH00 | LAUNDRY NET | ● | ● | ● | ● | ● | | | |
| FG619900BLA | UTILITY DRAWER W/ LOCK | | | | | | ● | ● | |
| FG9T94M20000 | BUNGEE KIT FOR SECURITY HANDLE | ● | ● | ● | ● | ● | ALREADY INCLUDED | ALREADY INCLUDED | ● |
| 2067692 | FULLSIZE HK CART BUMPER KIT NONPNEUMATIC | | | | | | ALREADY INCLUDED | | |
| 2067693 | COMPACT HK CART BUMPER KIT NONPNEUMATIC | | | | | | | ALREADY INCLUDED | |
| R050281 | WHEELS KIT WITH BRAKES | | | ● | ● | ● | | | |

● = FITS WITH



SAFETY SOLUTIONS

Every user entering a facility wants to feel safe. It is a facility's responsibility to provide clear warning signs for any hazards that might appear. RCP's highly visible and durable safety solutions will help you make your staff and users feel comfortable and safe.





MOBILE BARRIER

The Mobile Barrier is easy to use, easy to see, easy to move, and easy to store.



- Work in multiple configurations such as straight, curved, or circular
- Extends to 4 metres with 16 articulating panels that can be set straight, curved, or in a circle
- 2 non-marking wheels for quick deployment
- 4 locking straps to secure barrier in closed position
- Lightweight and compact (15kg)

| REF | DESCRIPTION | DIMENSIONS (CM) | COLOUR | PACK |
|-------------|-------------------------|---|--------|------|
| FG9S1100YEL | PORTABLE MOBILE BARRIER | Open up to 4 m long / Closed 60 x 35 x 100 cm | Yellow | 1 |

SAFETY CONES AND ACCESSORIES

The Safety Cones are highly visible, safeguarding against slip and fall accidents.



FG627600YEL

FG627777YEL

FG628400BLA

- Multilingual warning messages for effective communication
- Four-sided shape allows for efficient stacking
- Molded-in slots for easy handling
- Optional features include weight rings (FG628400BLA) for extra stability

| REF | DESCRIPTION | DIMENSIONS (CM) | COLOUR | PACK |
|-------------|---|--------------------|--------|------|
| FG627600YEL | SAFETY CONE - MULTILINGUAL "CAUTION" AND "WET FLOOR" SYMBOL | 31,1 x 31,1 x 91,4 | ● | 1 |
| FG627777YEL | 25" CONE "CAUTION WET FLOOR" | 26,6 x 26,6 x 65,4 | ● | 6 |
| FG628400BLA | WEIGHT RING (SINGLE) | 31,8 x 31,8 x 2,5 | ● | 1 |

HANGING SIGN

The multilingual "Closed For Cleaning" Hanging Sign utilises extendable pole to block doorways and entrances up to 112 cm wide.



- Torsion action to secure pole (max. extension 112 cm)
- Soft, pliable sign for ease of use and storage
- Multilingual "Closed for Cleaning" warning messages (English/Spanish on the front - French/English on the back)

| REF | DESCRIPTION | DIMENSIONS (CM) | COLOUR | PACK |
|-------------|---|---|--------|------|
| FG9S1600YEL | SITE SAFETY HANGING SIGN - MULTILINGUAL "CLOSED FOR CLEANING" | Closed: 63.5 x 2.5 x 33 cm / Open: 112 x 2.5 x 33 cm | ● | 6 |

STABLE SAFETY SIGNS

The multilingual "Caution" Signs are lightweight signs for effective safety communication.



- "Caution" warning messages printed in English, French and Spanish for effective communication to broad audiences.
- Folding design for convenient storage or transport on Cleaning Carts and Rim Caddy
- 2-sided or 4-sided floor signs
- Self-opening feet give sign large stable base (FG9S0900YEL)

| REF | DESCRIPTION | DIMENSIONS (CM) | COLOUR | PACK |
|-------------|---|--------------------|--------|------|
| FG611200YEL | 2-SIDED FLOOR SIGN - MULTILINGUAL "CAUTION WET FLOOR" SYMBOL | 66 x 27,9 x 63,5 | ● | 6 |
| FG611277YEL | 2-SIDED FLOOR SIGN - "CAUTION WET FLOOR" SYMBOL | 66 x 27,9 x 63,5 | ● | 6 |
| FG611400YEL | 4-SIDED FLOOR SIGN - MULTILINGUAL "CAUTION" SYMBOL | 96,5 x 30,4 x 93,9 | ● | 6 |
| FG611477YEL | 4-SIDED FLOOR SIGN - MULTILINGUAL "CAUTION WET FLOOR" SYMBOL | 96,5 x 30,4 x 93,9 | ● | 6 |
| FG9S0900YEL | STABLE SAFETY SIGN - "CAUTION" | 66 x 33 x 4.3 | ● | 6 |
| 1867505 | 2-SIDED FLOOR SIGN - MULTILINGUAL "CAUTION SIGN" SYMBOL BLACK | 66 x 27,9 x 63,5 | ● | 6 |
| 1867507 | 2-SIDED WOOD SAFETY SIGN, GOLD WOOD (WITH BRASS PLATE) | 60,3 x 38,2 x 58,4 | ● | 1 |
| 1867508 | 2-SIDED WOOD SAFETY SIGN, SILVER WOOD (WITH BRASS PLATE) | 60,3 x 38,4 x 58,4 | ● | 1 |

POP-UP CONES

The multilingual "Wet Floor" Pop-Up Safety Cone is a collapsible sign that automatically deploys when removed from wall-mounted storage tube.



- Storage tube for easy and compact storage
- Can be wall mounted (mounting hardware includes tape and screws)
- "Caution" warning message imprinted in English, French, and Spanish provides effective communication to a broad audience
- 3-sided design is highly visible from multiple directions

| REF | DESCRIPTION | DIMENSIONS (CM) | COLOUR | PACK |
|-------------|---|-------------------|--------|------|
| FG9S0000YEL | POP-UP CONE 50 CM - MULTILINGUAL "CAUTION" SYMBOL | 6,3 x 53,3 x 50,8 | ● | 12 |
| FG9S0100YEL | POP-UP CONE 76 CM - MULTILINGUAL "CAUTION" SYMBOL | 7.3 x 53,3 x 76,2 | ● | 12 |

OVER-THE-SPILL SYSTEM

The Over-the-Spill Station is a dispensing station that mounts on flat surfaces and has pads that soak up liquids quickly and completely for an effective way to deal with spills.



FG425100YEL



FG425400YEL



FG425200YEL

OVER-THE-SPILL® STATION KIT WITH REFILL PADS

- Absorbs water and oil
- Dispensing station mounts on flat surfaces
- Each yellow pad is coded with universal caution symbol and "Caution Wet Floor" message in English and Spanish
- Kit includes: Pad dispenser, 22 large pads, and fasteners

OVER-THE-SPILL® TABLET

- Tablet mounts easily onto a floor sign or any flat surface
- Each medium size pad absorbs up to 0.34 l of liquid
- Pads resist slipping
- Perforated pads are easy to remove

| REF | DESCRIPTION | DIMENSIONS (CM) | COLOUR | PACK |
|-------------|-------------------------------------|-------------------|--------|------|
| FG425100YEL | OVER-THE-SPILL® STATION KIT | 53,3 x 41,5 x 4,1 | ● | 6 |
| FG425200YEL | OVER-THE-SPILL® REFILL FOR FG425100 | 50.8 x 41 | ● | 12 |
| FG425400YEL | OVER-THE-SPILL® TABLET | 41,9 x 35,5 x 0.2 | ● | 12 |





MATERIAL HANDLING

Super-strong tools that perform in even the toughest environments.

Built from durable plastics such as HDPE, structural foam or structural web, our products provide lightweight and easy-to-use products that make material handling simpler, more comfortable and more cost-effective.



MEGA BRUTE®

The Mega BRUTE® Mobile Collector is a highly maneuverable and versatile collection and sortation system.



- High capacity: 450 l
- Rear doors allow easy removal of content
- Polyliner retainer (secures a 200 l liner)
- Turns on its own axis and fits in tight environments
- Usable with 87 l Slim Jim®
- Optional lid fully covers waste and supplies

| REF | DESCRIPTION | DIMENSIONS (CM) | COLOUR | PACK |
|-------------|--|----------------------|--------|------|
| FG9W7300BLA | MEGA BRUTE® MOBILE WASTE COLLECTOR | 133,3 x 69,8 x 107,9 | ● | 1 |
| FG9W7200BLA | MEGA BRUTE® MOBILE WASTE COLLECTOR LID | 125,7 x 76,2 x 26,6 | ● | 2 |

TILT TRUCK

The Tilt Truck Structural Foam is designed for general refuse collection and medium materials handling.



- Easy-to-clean and virtually maintenance free
- Mark-resistant casters for reduced touch-up cleaning
- Unique "steering wheel" handle provides excellent manoeuvring capability and safe handling
- Optional domed lid available
- 2 swivel and 2 rigid casters
- Capacity up to 800 l/955 kg

| REF | DESCRIPTION | VOLUME | DIMENSIONS (CM) | COLOUR | PACK |
|-------------|--------------------------------|-------------------|----------------------|--------|------|
| FG9T1300BLA | TILT TRUCK - STANDARD DUTY | 0.4M ³ | 145,7 x 68,3 x 86 | ● | 1 |
| FG9T1400BLA | TILT TRUCK - HEAVY DUTY | 0.4M ³ | 145,7 x 68,3 x 86 | ● | 1 |
| FG9T2200BLA | LID FITS FG9T1300 AND FG9T1400 | - | 132,1 x 70,8 x 22,9 | ● | 1 |
| FG101100BLA | TILT TRUCK - STANDARD DUTY | 0.6M ³ | 163,8 x 76,8 x 96,5 | ● | 1 |
| FG101300BLA | TILT TRUCK - HEAVY DUTY | 0.6M ³ | 163,8 x 76,8 x 96,5 | ● | 1 |
| FG102800BLA | LID FITS FG101100 AND FG101300 | - | 154,9 x 80,6 x 22,2 | ● | 1 |
| FG9T1500BLA | TILT TRUCK - STANDARD DUTY | 0.8M ³ | 179,7 x 85,1 x 107,3 | ● | 1 |
| FG9T1600BLA | TILT TRUCK - HEAVY DUTY | 0.8M ³ | 179,7 x 85,1 x 107,3 | ● | 1 |
| FG9T2300BLA | LID FITS FG9T1500 AND FG9T1600 | - | 169,2 x 87,6 x 22,9 | ● | 1 |

CUBE TRUCK

The Cube Truck is ideal for commercial waste collection and material transport.



FG461300BLA



FG461600BLA

- Diamond wheel placement for manoeuvrability
- Smooth surface facilitates cleaning
- Designed to fit through doorways
- 2 swivel and rigid casters
- Domed, hinged lid conceals loads without reducing capacity
- Capacity up to 600 l/272.2 kg

| REF | DESCRIPTION | VOLUME | DIMENSIONS (CM) | COLOUR | PACK |
|-------------|---|--------------------|---------------------|--------|------|
| FG460900BLA | LID FITS FG460800 | - | 97,5 x 65,4 x 21,6 | ● | 1 |
| FG461200BLA | CUBE TRUCK | 0.3 M ³ | 108,6 x 71,1 x 83,8 | ● | 1 |
| FG461300BLA | LID FITS FG461200 | - | 109,5 x 69,8 x 21,6 | ● | 1 |
| FG461400BLA | CUBE TRUCK | 0.4 M ³ | 112,1 x 78,7 x 82,6 | ● | 1 |
| FG461600BLA | CUBE TRUCK | 0.5 M ³ | 111,1 x 78,7 x 94 | ● | 1 |
| FG461100BLA | SPRING PLATFORM CUBE TRUCK | 0.4 M ³ | 112,1 x 78,7 x 82,6 | ● | 1 |
| FG461500BLA | LID FITS FG461400 / FG461600 / FG461100 | - | 112,1 x 78,7 x 21,6 | ● | 1 |
| FG461900BLA | CUBE TRUCK | 0.6 M ³ | 121,9 x 86,7 x 92,7 | ● | 1 |
| FG461700BLA | LID FITS FG461800 / FG461900 | - | 123,2 x 86,4 x 21,6 | ● | 1 |



CONVERTIBLE UTILITY CART

Convertible Utility Cart Converts from a utility cart to a platform truck in just seconds.



FG430000BLA



Utility Cart



Platform truck



87 cm High
27 cm High

- Push buttons depress to easily convert from cart to platform truck
- Foot pedal depresses to fold cart for storage
- Ergonomic handle designed for comfort
- Recessed top helps retain items on shelf during transport
- Total 182 kg load capacity (68 kg on top shelf and 114 kg on lower shelf)
- Capacity up to 800 l/955 kg

| REF | DESCRIPTION | DIMENSIONS (CM) | COLOUR | PACK |
|-------------|--------------------------|--|--------|------|
| FG430000BLA | CONVERTIBLE UTILITY CART | 115.0 x 60.5 x 87.4 cm (Utility) 115.0 x 60.5 x 111.3 cm (Platform) 124.0 x 60.5 x 27.7 cm (Storage) | ● ● | 1 |

HEAVY DUTY CART

The Heavy-Duty Utility Cart with Lipped Shelf transports materials, supplies, and heavy loads securely.



FG452058BLA

- Ergonomic handle design improves control and worker safety
- Designed with rounded corners to protect furniture, walls, and doorways
- Customise-it fittings built in: add your own wire spools, rolls, etc.
- Lipped shelf features integrated V-notch to hold pipe and conduit securely for safe cutting
- Deep pocket shelves to keep loads secure
- 220 kg weight capacity for heavy loads
- Locking casters compliant with the EN-1757-3

| REF | DESCRIPTION | DIMENSIONS (CM) | COLOUR | PACK |
|-------------|--------------------------------|-----------------|--------|------|
| FG450058BLA | HEAVY-DUTY CART LIPPED SHELF S | 99 x 43,8 x 85 | ● | 1 |
| FG452058BLA | HEAVY-DUTY CART LIPPED SHELF M | 115 x 64 x 85 | ● | 1 |

TRADEMASTER™

The TradeMaster™ Cart with 4 Drawers is a complete tool storage and mobile workbench system, with shelving and cabinet configurations to meet any storage needs.



FG451388BLA

FG453388BLA

- Features locking cabinet doors and 10 cm deep drawers for versatile tool and supply storage and organisation
- Drawers feature commercial quality, ball bearing slides
- Metal reinforced structural foam shelves engineered for durability
- Two non-marking 12.7 cm casters and two swivel casters with full-locking mechanism
- FG453388BLA supports up to 340 kg

| REF | DESCRIPTION | DIMENSIONS (CM) | COLOUR | PACK |
|-------------|--|-----------------|--------|------|
| FG451388BLA | TRADEMASTER™ - 4 DRAWER CART | 103 x 47 x 84 | ● ● | 1 |
| FG453388BLA | TRADEMASTER™ - 4 DRAWER, 1 DOOR MOBILE CABINET | 125 x 68 x 96 | ● ● | 1 |

TRADE CART

Moves productivity right to the work site: a total tool storage and mobile workbench system.



FG618000BLA

- Two storage bins hold essential hand tools and supplies
- Designed to move easily over hard surfaces, through lifts and doorways
- Flat surface at ergonomic height provides convenient work area
- 4 large non-marking casters (2 swivel, 2 locking)
- Capacity (81.6 kg top shelf / 68 kg bottom shelf)

| REF | DESCRIPTION | DIMENSIONS (CM) | COLOUR | PACK |
|-------------|-------------|--------------------|--------|------|
| FG618000BLA | TRADE CART | 96,5 x 48,9 x 84,8 | ● ● | 1 |

EXECUTIVE SERVICE CART

The Executive Service Cart is an elegant and versatile solution for back and front-of-house tasks.



FG9T6800BLA

- Ergonomic rounded handles improves manoeuvrability and comfort
- Wrap-around end panels conceals cart contents
- Solid rounded bumper gentle on walls and furniture
- Sleek, contemporary styling ideal for front or back-of-house applications
- 20% more top-shelf capacity accommodates two RCP bus boxes, increasing productivity

| REF | DESCRIPTION | DIMENSIONS (CM) | COLOUR | PACK |
|-------------|------------------------|-----------------|--------|------|
| FG9T6800BLA | EXECUTIVE SERVICE CART | 99,06 x 51 x 99 | ● | 1 |



X-TRA™ CART

Durable and attractive storage and transportation carts for front and back-of-house applications.



- 1** MOULDED SHELVES
- 2** CAN SUPPORT UP TO 135 KG
- 3** NON-MARKING CASTERS

- Metal uprights and moulded shelves engineered for durability and appearance
- Non-marking 10.2 cm swivel casters
- Wide shelves hold a variety of equipment and supplies, up to 135 kg
- Available with locking doors and enclosure panels

| REF | DESCRIPTION | DIMENSIONS (CM) | COLOUR | PACK |
|--------------|---|----------------------|--------|------|
| 1814566 | X-TRA™ CART OPEN | 103,2 x 50,8 x 96 | ● | 1 |
| 1814567 | X-TRA™ CART OPEN | 103,2 x 50,8 x 96 | ○ | 1 |
| FG409300BLA | X-TRA™ CART CLOSED 3 SIDES | 103,2 x 50,8 x 96 | ● | 1 |
| FG409400GRAY | X-TRA™ CART INCL. DRAWER + CABINET | 103,2 x 50,8 x 129,5 | ● | 1 |
| FG409600BLA | X-TRA™ CART 4 SHELVES | 10,2 | ● | - |
| R050281 | SET OF 2 SWIVEL CASTERS WITH BRAKES + 2 SWIVEL CASTERS WITHOUT BRAKES | - | ● | - |



UTILITY CART

The Service Utility Cart is a versatile and durable cart that can perform a wide variety of tasks.



FG342488BLA



FG342488OWHT



FG342488PLAT



FG342100BLA

1 MOULDED SHELVES

2 CAN SUPPORT UP TO 135 KG

3 NON-MARKING CASTERS

- Smooth, easy-to-clean surfaces
- Ergonomic, easy grip handles
- FG342100BLA has side panels to conceal and contain cargo
- 4 swivel casters

| REF | DESCRIPTION | DIMENSIONS (CM) | COLOUR | PACK |
|--------------|-----------------------------|--------------------|--------|------|
| FG342100BLA | UTILITY CART CLOSED 2 SIDES | 85,4 x 47,3 x 93 | ● | 1 |
| FG342488BLA | UTILITY CART BLACK | 85,4 x 47,3 x 95,9 | ● | 1 |
| FG342488OWHT | UTILITY CART WHITE | 85,4 x 47,3 x 95,9 | ○ | 1 |
| FG342488PLAT | UTILITY CART BEIGE | 85,4 x 47,3 x 95,9 | ● | 1 |

CART ACCESSORIES

A range of bins to customise the carts for specific usage.



FG335388BLA



FG334900GRAY



FG335488BLA

- Smooth, easy-to-clean surface
- The refuse and utility bins fit the following carts: FG342100, FG342488, FG409100, FG409300, FG409400, FG409600, FG618000, FG9T6800, FG450058, FG452058, all Tilt Trucks and TradeMasters™

| REF | DESCRIPTION | DIMENSIONS (CM) | COLOUR | PACK |
|--------------|-----------------|--------------------|--------|------|
| FG335388BLA | REFUSE BIN | 55,9 x 43,2 x 30,5 | | 1 |
| FG335488BLA | UTILITY BIN | 26,7 x 43,2 x 30,8 | | 1 |
| FG334900GRAY | BUS UTILITY BOX | - | | - |



TRIPLE™ TROLLEY

The Triple™ Trolley efficiently transports large bulky loads and then folds flat for easy storage.



FG440100BLA

- Very robust construction, does not dent or rust
- Wide, easy-to-load deck which is perfectly stable when transporting goods
- Cut away sections in decks provide hand hold for easy carrying when handle is folded
- Folds away for space efficient storage
- 2 swivel and 2 rigid casters
- Load up to 181.4 kg

| REF | DESCRIPTION | DIMENSIONS (CM) | COLOUR | PACK |
|-------------|-----------------|--------------------|--------|------|
| FG440100BLA | TRIPLE™ TROLLEY | 82,5 x 52,1 x 14,2 | ● | 1 |

STEP STOOL

Heavy-duty stepstool glides easily on retractable rubber casters and supports loads up to 158.8 kg.



FG252300BLA

- Soft, slip resistant pads on both steps.
- Wheels retract when stepped on.
- Heavy-duty plastic construction will not damage walls or furniture

| REF | DESCRIPTION | DIMENSIONS (CM) | COLOUR | PACK |
|-------------|-------------|-------------------|--------|------|
| FG252300BLA | STEP STOOL | 40,6 x 34,3 x 2,7 | ● | 1 |

BRUTE® TOTE

The BRUTE® Tote Storage Bin with lid is a heavy-duty storage container used for storing and transporting items.



- Made of commercial grade polyethylene to withstand heavy duty use
- Easy grip handles for lifting and shifting
- Holes in handle allow water to drain, reducing risk of bacteria build up
- Lid snaps tight, keeping contents secure
- Reinforced ribbed bottom allows product to be dragged

| REF | DESCRIPTION | DIMENSIONS (CM) | COLOUR | PACK |
|--------------|--------------------|--------------------|--------|------|
| FG9S3000GRAY | BRUTE® TOTE 53 L | 70,7 x 44,1 x 27,1 | ● | 6 |
| FG9S3000WHT | BRUTE® TOTE 53 L | 70,7 x 44,1 x 27,1 | ○ | 6 |
| FG9S3100GRAY | BRUTE® TOTE 75.5 L | 70,7 x 44,1 x 38,4 | ● | 6 |
| FG9S3100WHT | BRUTE® TOTE 75.5 L | 70,7 x 44,1 x 38,4 | ○ | 6 |





©2022 Rubbermaid Commercial Products LLC

To see our complete range, visit [rubbermaid.eu](https://www.rubbermaid.eu)